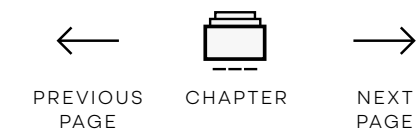


OLYMP

Corporate Fashion  
**NOS / 06**  
Never Out Of Stock



OLYMP



**NOS / 06**

**POLOS · T-SHIRTS**

**LUXOR COMFORT FIT**

**LUXOR MODERN FIT**

**LEVEL FIVE**

**NO. SIX**

**TENDENZ**

**LUCKY BLUSEN /  
BLOUSES**

**FEUERWEHR /  
FIRE BRIGADE PILOT**

**ACCESSORIES**

**INFO · CONTACT**



# Corporate Fashion NOS / 06 Never Out Of Stock

## OLYMP Corporate Fashion – NOS-Programm No. 6

OLYMP steht für kompromisslose Qualität bei Materialien und Verarbeitung, hervorragende Trage- und Pflegevorteile, ein optimales Preis-Leistungs-Verhältnis, eine überzeugende modische Aussage und verantwortungsvolles Handeln.

Als langjähriger Lieferant von Dienst- und Uniformhemden sowie -blusen für diverse Bundesländer, Feuerwehren, Fluggesellschaften, Firmenkunden und Behörden hat sich die Marke OLYMP als verlässlicher Anbieter zeitgemäßer, hochwertiger und haltbarer Corporate Fashion einen internationalen Namen gemacht.

Unser Produktangebot umfasst diverse Hemden- und Blusenlinien in unterschiedlichen Schnittvarianten, zahlreichen Farben, diversen Kragenformen, Ärmellängen und Sondergrößen. Hinzu kommen Polo- und T-Shirts sowie Krawatten als Accessoire.

Neu:

- Unter anderem unsere Auswahl an Poloshirts in optimierter Passform, acht Farbstellungen und zwei Materialausführungen – als schnell trocknendes Active Dry (57 % Baumwolle, 43 % Polyester) und als Piqué (96 % Baumwolle, 4 % Elasthan), bei welchem wir unser Größenangebot in vier Farben bis Größe 4XL bei Damen und 6XL bei Herren erweitern konnten.
- Neu im Sortiment sind Hemden und Blusen aus Twill in Weiß und Hellblau als blickdichte Variante
- Erweiterung des Sortiments um Lucky Hemden und Blusen (Hemden/Blusen mit Besatz)
- Unsere Pilotenhemden haben wir um eine zusätzliche Schnittform erweitert: body fit in Größe 36–42.
- Nicht zuletzt überzeugt das neue Programm sortimentsübergreifend durch mehr Durchgängigkeit bei allen Artikeln in den verschiedenen Schnittformen.

## Unsere Haltung. Unser Statement.

Als global agierendes Familienunternehmen übernimmt OLYMP auch global Verantwortung für Mensch, Umwelt, Klima und Gesellschaft. Das Nachhaltigkeitsprogramm von OLYMP beruht auf drei starken Säulen und hat dabei die gesamte Geschäftstätigkeit im Blick: vom zunehmenden Einsatz nachhaltigerer Rohstoffe über die Umsetzung von Sozial- und Umweltstandards entlang der Lieferkette bis hin zum aktiven Klimaschutz am Firmensitz. Dafür engagieren wir uns aktiv in zahlreichen Initiativen, Verbänden und Organisationen, die sich für eine nachhaltigere Textilwirtschaft einsetzen. Detaillierte Informationen hierzu finden Sie in der beiliegenden Broschüre.

## OLYMP Corporate Fashion - NOS Programme No. 6

OLYMP represents uncompromising quality with regard to materials and finishing, outstanding wear and care advantages, optimum value for money, a winning fashion statement and responsible behaviour.

As a long-standing supplier of service and uniform shirts and blouses for various federal states, fire departments, airlines, corporate clients and authorities, the OLYMP brand has made an international name for itself as a reliable supplier of contemporary, high quality and durable corporate fashion.

Our product range includes a variety of shirt and blouse lines in different cuts, numerous colours, various collar styles, arm lengths and special sizes. We also have polo shirts and T-shirts and ties as accessories.

New:

- Our selection of polo shirts in an optimised fit, eight colour combinations and two different fabrics – as a fast-drying Active Dry (57% cotton, 43% polyester) and as a piqué (96% cotton, 4% elastane). In four colours, we have extended our size range to 4XL for women and 6XL for men.
- New to the range are twill shirts and blouses in white and light blue as an opaque option.
- Expansion of the range to include Lucky shirts and blouses (shirts/blouses with a trim)
- We have extended our range of pilot's shirts to include an additional cut: body fit in size 36-42.
- Last but not least, the new range impresses across all product lines with more consistency for all items in the various cuts.

## Our Stance. Our Statement.

As a family business active all over the world, OLYMP also assumes a global responsibility for people, the environment, climate and society. OLYMP's sustainability programme is based on three strong pillars and focuses on its entire range of business activities: from the increasing use of more sustainable raw materials to implementation of social and environmental standards along the supply chain to active climate protection at its headquarters. This is why we are actively involved in many initiatives, associations and organisations that support a sustainable textile industry. For detailed information, please refer to the enclosed brochure.

OLYMP



NOS / 06

POLOS · T-SHIRTS

LUXOR COMFORT FIT

LUXOR MODERN FIT

LEVEL FIVE

NO. SIX

TENDENZ

LUCKY BLUSEN /  
BLOUSES

FEUERWEHR /  
FIRE BRIGADE PILOT

ACCESSORIES

INFO · CONTACT



WRITE US  
AN EMAIL

# OLYMP

Polos · T-Shirts

OLYMP



**NOS / 06**

**POLOS · T-SHIRTS**

**LUXOR COMFORT FIT**

**LUXOR MODERN FIT**

**LEVEL FIVE**

**NO. SIX**

**TENDENZ**

**LUCKY BLUSEN /  
BLOUSES**

**FEUERWEHR /  
FIRE BRIGADE PILOT**

**ACCESSORIES**

**INFO · CONTACT**



SEARCH  
DOCUMENT



WRITE US  
AN EMAIL



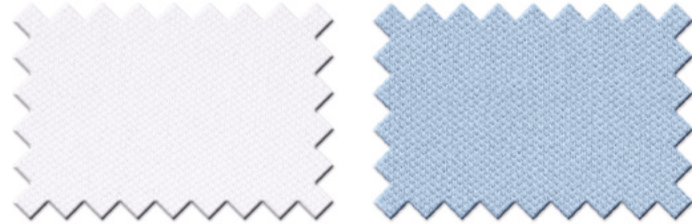
**OLYMP**

Polos · Modern Fit · Herren / Men

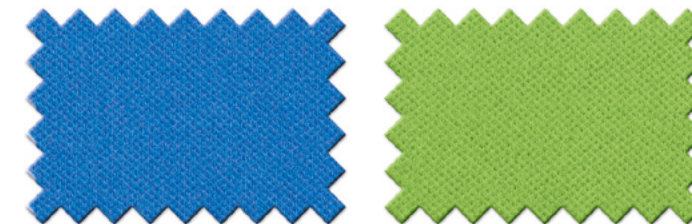
Art. **0862** Grössen / Sizes **XS - 4XL**

**Polo Piqué** Halbarm / Short sleeve **1/2**

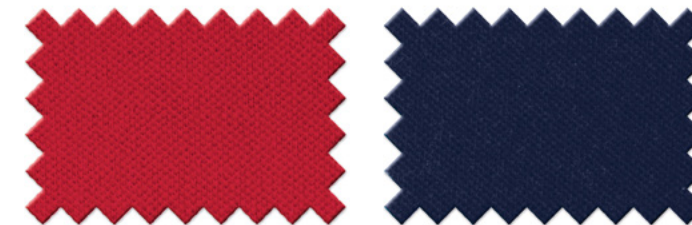
96 % Baumwolle / 4 % Elasthan  
96 % cotton / 4 % elastane



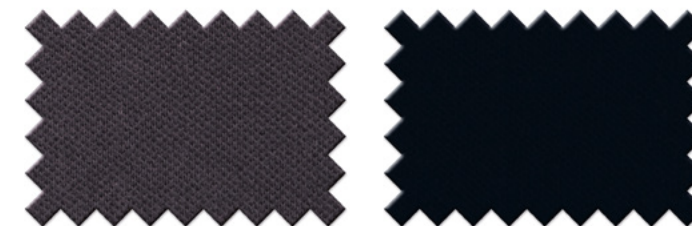
J 086212 00 **bis 6XL** J 086212 11



J 086212 19 J 086212 40



J 086212 35 J 086212 18 **bis 6XL**



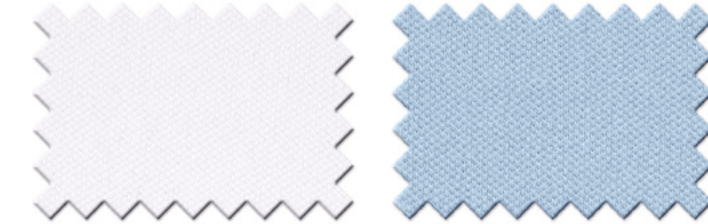
J 086212 67 **bis 6XL** J 086212 68 **bis 6XL**

Polos · Modern Fit · **Damen / Ladies**

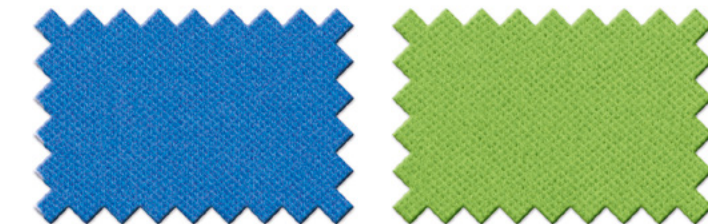
Art. **0871** Grössen / Sizes **XS - 3XL**

**Polo Piqué** Halbarm / Short sleeve **1/2**

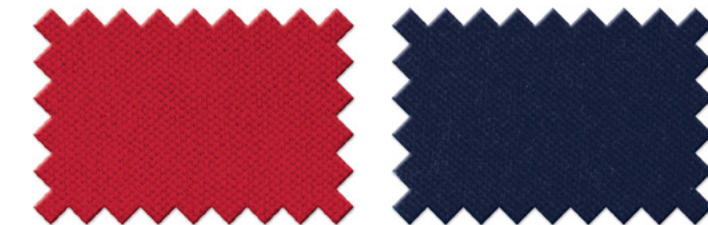
96 % Baumwolle / 4 % Elasthan  
96 % cotton / 4 % elastane



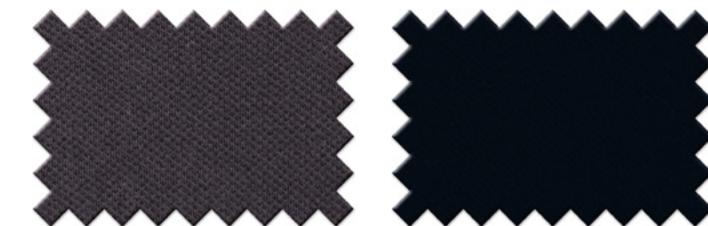
J 087112 00 **bis 4XL** J 087112 11



J 087112 19 J 087112 40



J 087112 35 J 087112 18 **bis 4XL**



J 087112 67 **bis 4XL** J 087112 68 **bis 4XL**

**OLYMP**



**NOS / 06**

**POLOS · T-SHIRTS**

**LUXOR COMFORT FIT**

**LUXOR MODERN FIT**

**LEVEL FIVE**

**NO. SIX**

**TENDENZ**

**LUCKY BLUSEN /  
BLOUSES**

**FEUERWEHR /  
FIRE BRIGADE PILOT**

**ACCESSORIES**

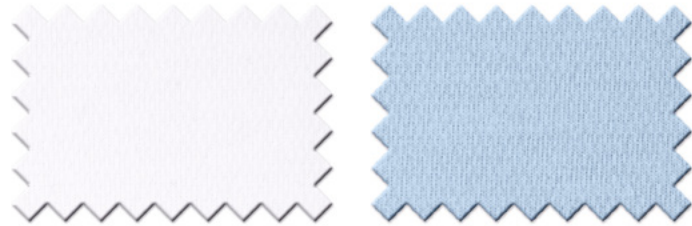
**INFO · CONTACT**



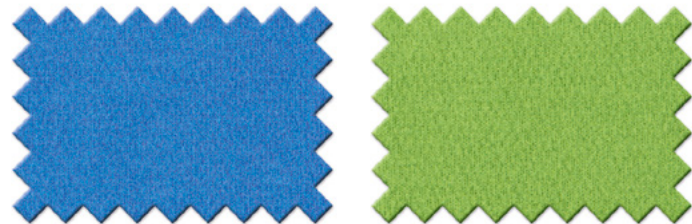
Art. **0864** Grössen / Sizes **XS - 4XL**

**Polo Active Dry** Halbarm / Short sleeve **1/2**

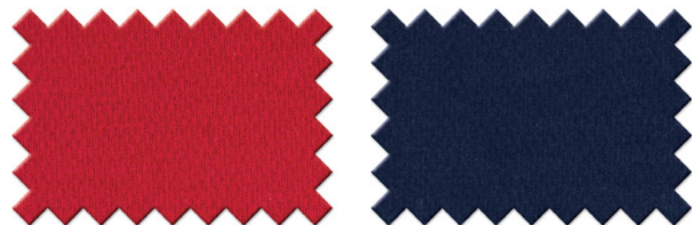
57 % Baumwolle / 43 % Polyester  
57 % cotton / 43 % polyester



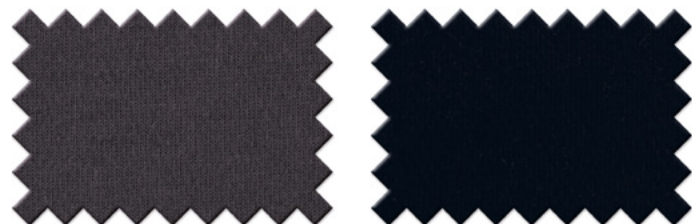
G 086412 00 G 086412 11



G 086412 19 G 086412 40



G 086412 35 G 086412 18

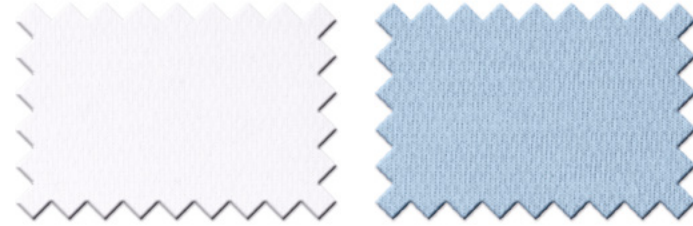


G 086412 67 G 086412 68

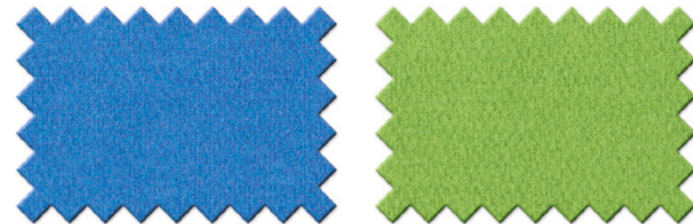
Art. **0872** Grössen / Sizes **XS - 3XL**

**Polo Active Dry** Halbarm / Short sleeve **1/2**

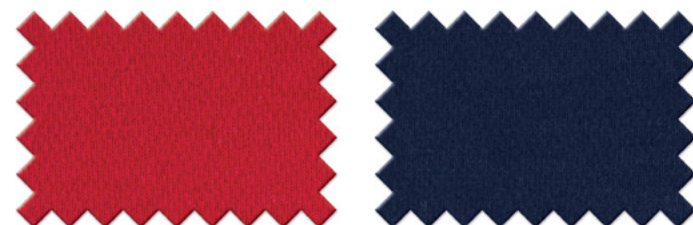
57 % Baumwolle / 43 % Polyester  
57 % cotton / 43 % polyester



G 087212 00 G 087212 11



G 087212 19 G 087212 40



G 087212 35 G 087212 18



G 087212 67 G 087212 68

Art. **0801** Grössen / Sizes **XS - 4XL**

T-Shirt V-Neck · Single Pack Halbarm / Short sleeve **1/2**

94 % Baumwolle / 6 % Elasthan  
94 % Cotton / 6 % Elastane



B 080112 24



**NOS / 06**

**POLOS · T-SHIRTS**

**LUXOR COMFORT FIT**

**LUXOR MODERN FIT**

**LEVEL FIVE**

**NO. SIX**

**TENDENZ**

**LUCKY BLUSEN / BLOUSES**

**FEUERWEHR / FIRE BRIGADE PILOT**

**ACCESSORIES**

**INFO · CONTACT**

# OLYMP

## LUXOR

Comfort Fit

OLYMP



**NOS / 06**

**POLOS · T-SHIRTS**

**LUXOR COMFORT FIT**

**LUXOR MODERN FIT**

**LEVEL FIVE**

**NO. SIX**

**TENDENZ**

**LUCKY BLUSEN /  
BLOUSES**

**FEUERWEHR /  
FIRE BRIGADE PILOT**

**ACCESSORIES**

**INFO · CONTACT**



SEARCH  
DOCUMENT



WRITE US  
AN EMAIL

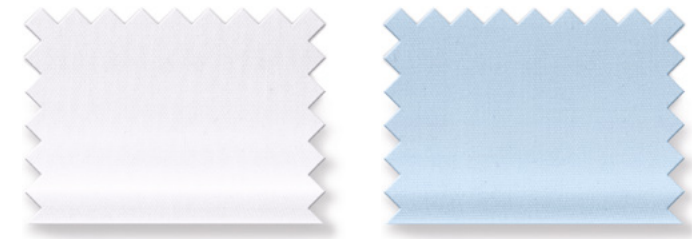


**OLYMP**

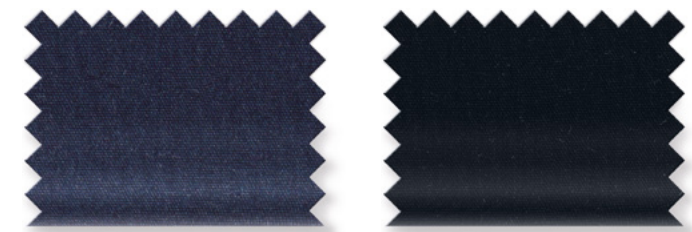
LUXOR · Comfort Fit · Hemden / Shirts

Art. **0254 / 0251** Grössen / Sizes **40 - 50**

Uni Halbarm / Short sleeve **1/2**



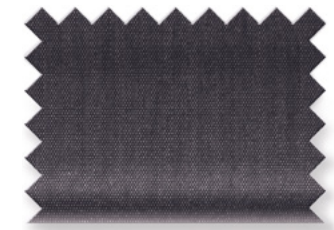
L 025412 00 New Kent L 025412 15 New Kent  
L 025112 00 Button-down



L 025412 18 New Kent L 025412 68 New Kent

Art. **5131** Grössen / Sizes **40 - 50**

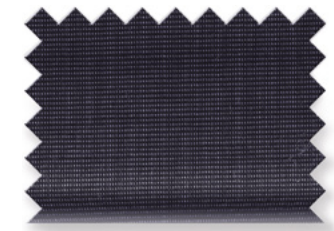
Chambray Halbarm / Short sleeve **1/2**



L 513112 67 New Kent

Art. **0255** Grössen / Sizes **40 - 50**

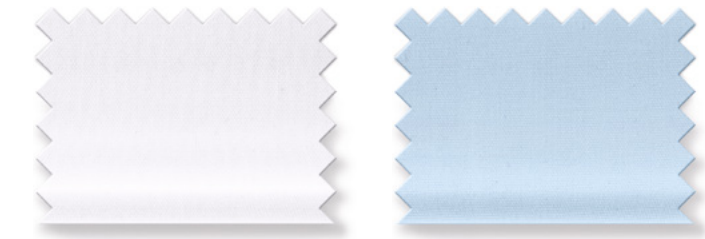
Fil à Fil Halbarm / Short sleeve **1/2**



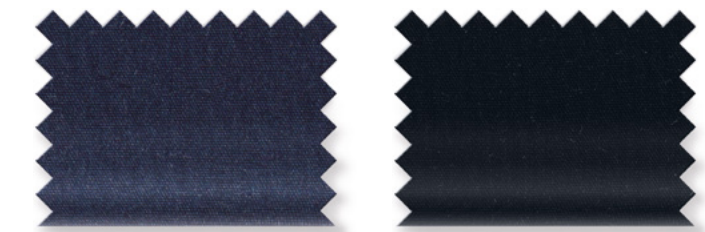
L 025512 68 New Kent

Art. **0254/ 0251** Grössen / Sizes **40 - 50**

Uni Langarm / Long sleeve **1/1**



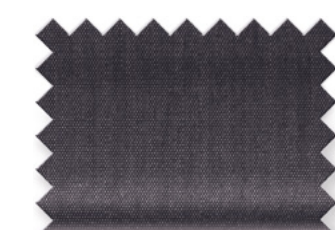
M 025464 00 New Kent M 025464 15 New Kent  
M 025164 00 Button-down



M 025464 18 New Kent M 025464 68 New Kent

Art. **5131** Grössen / Sizes **40 - 50**

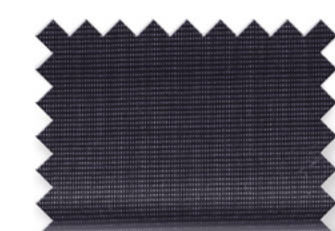
Chambray Langarm / Long sleeve **1/1**



M 513164 67 New Kent

Art. **0255** Grössen / Sizes **40 - 50**

Fil à Fil Langarm / Long sleeve **1/1**



M 025564 68 New Kent

- 100 % Baumwolle / 100 % Cotton
- Bügelfrei / Non-iron
- Atmungsaktiv / Breathable
- Knitterfrei / Wrinkle-free
- Italienische Knopfleiste / Italian button panel
- Verstellbare Manschetten mit Kombi-Funktion / Adjustable cuffs with combi function

Hautsympathisch / Kind to the skin    Klassisch bequeme Passform / Classic comfortable fit    Oeko-Tex® Standard 100 Nr. 95.0.3008

**OLYMP**



**NOS / 06**

**POLOS · T-SHIRTS**

**LUXOR COMFORT FIT**

**LUXOR MODERN FIT**

**LEVEL FIVE**

**NO. SIX**

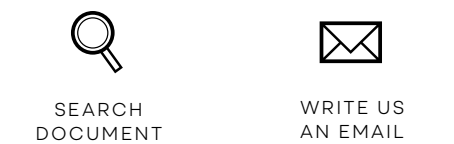
**TENDENZ**

**LUCKY BLUSEN / BLOUSES**

**FEUERWEHR / FIRE BRIGADE PILOT**

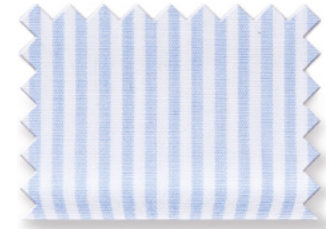
**ACCESSORIES**

**INFO · CONTACT**



Art. **0280** Grössen / Sizes **40 - 48**

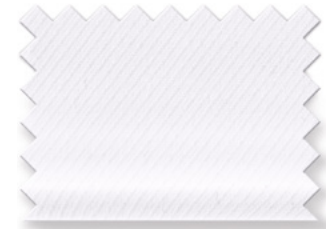
Zündholzstreifen / Fine stripe Langarm / Long sleeve **1/1**



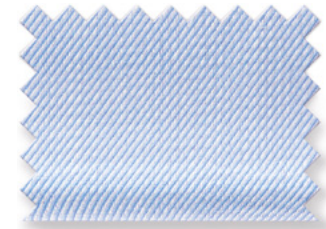
M 028064 11 New Kent

Art. **0725** Grössen / Sizes **40 - 50**

Twill Langarm / Long sleeve **1/1**



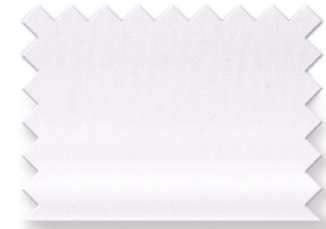
R 072564 00 New Kent



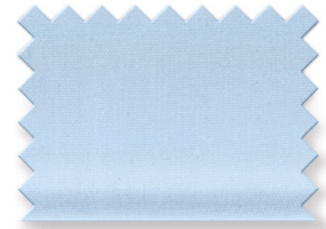
R 072564 11 New Kent

Art. **0261** Grössen / Sizes **40 - 50**

Uni Langarm / Long sleeve **1/1**  
Ohne Brusttasche / Without chest pocket



M 026164 00 New Kent



M 026164 15 New Kent



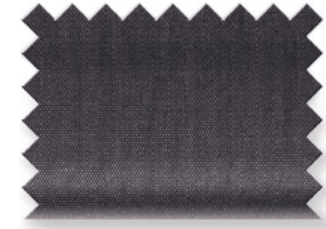
M 026164 18 New Kent



M 026164 68 New Kent

Art. **0262** Grössen / Sizes **40 - 50**

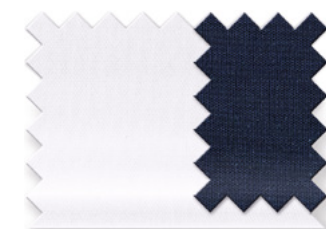
Chambray Langarm / Long sleeve **1/1**  
Ohne Brusttasche / Without chest pocket



M 026264 67 New Kent

Art. **0437** Grössen / Sizes **40 - 50**

Langarm / Long sleeve **1/1**  
Ohne Brusttasche / Without chest pocket



R 043764 00 Global Kent



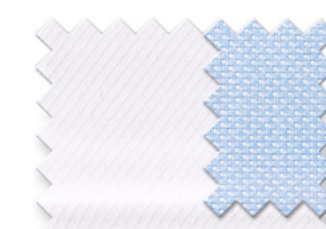
Kragen / Collar



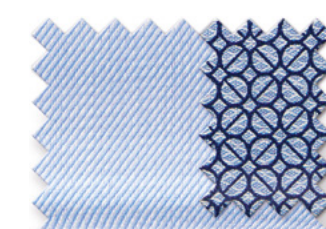
Manschette / Cuff

Art. **0266 / 0263** Grössen / Sizes **40 - 50**

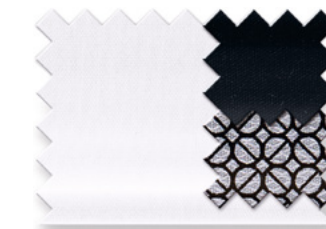
Langarm / Long sleeve **1/1**  
Ohne Brusttasche / Without chest pocket



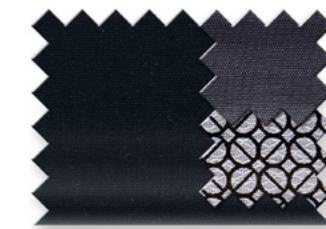
R 026664 00 Global Kent



R 026664 11 Global Kent



R 026364 00 Global Kent



R 026364 68 Global Kent



Kragen / Collar



Manschette / Cuff

**NOS / 06**

**POLOS · T-SHIRTS**

**LUXOR COMFORT FIT**

**LUXOR MODERN FIT**

**LEVEL FIVE**

**NO. SIX**

**TENDENZ**

**LUCKY BLUSEN / BLOUSES**

**FEUERWEHR / FIRE BRIGADE PILOT**

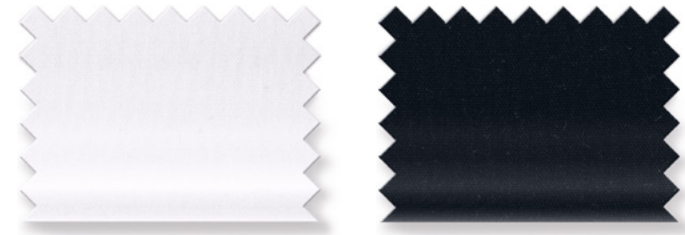
**ACCESSORIES**

**INFO · CONTACT**

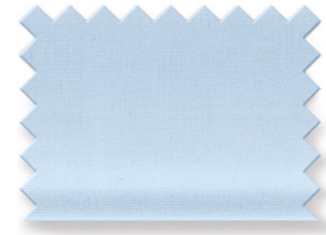


Art. **0254** Grössen / Sizes **52 + 54**

Uni Halbarm / Short sleeve **1/2**



L 025412 00 New Kent L 025412 68 New Kent



L 025412 15 New Kent

Art. **0437** Grössen / Sizes **52 + 54**

Langarm / Long sleeve **1/1**

Ohne Brusttasche / Without chest pocket



R 043764 00 Global Kent



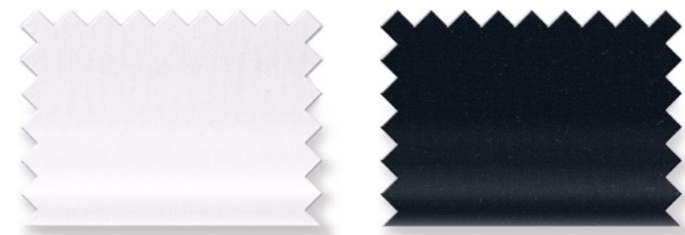
Kragen / Collar



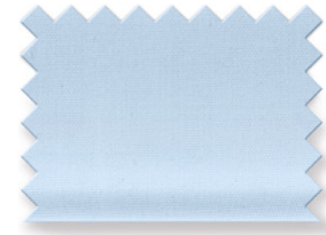
Manschette / Cuff

Art. **0254** Grössen / Sizes **52 + 54**

Uni Langarm / Long sleeve **1/1**



M 025464 00 New Kent M 025464 68 New Kent



M 025464 15 New Kent

Art. **0725** Grössen / Sizes **52 + 54**

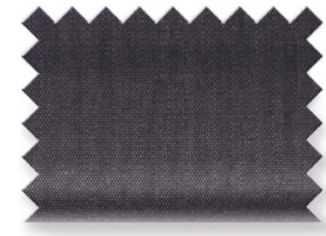
Twill Langarm / Long sleeve **1/1**



R 072564 00 New Kent

Art. **5131** Grössen / Sizes **52 + 54**

Chambray Langarm / Long sleeve **1/1**



M 513164 67 New Kent

Art. **0254** Grössen / Sizes **40 - 48**

Uni **Extra kurzer Arm / Extra short sleeve** **58**



M 025458 00 New Kent

Art. **0254** Grössen / Sizes **40 - 48**

Uni **Extra langer Arm / Extra long sleeve** **69**



M 025469 00 New Kent

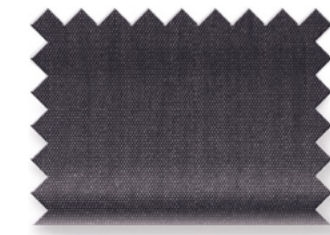
M 025469 15 New Kent



M 025469 68 New Kent

Art. **5131** Grössen / Sizes **40 - 48**

Chambray **Extra langer Arm / Extra long sleeve** **69**



M 513169 67 New Kent

Art. **0437** Grössen / Sizes **40 - 48**

**Extra langer Arm / Extra long sleeve** **69**

Ohne Brusttasche / Without chest pocket



R 043769 00 Global Kent



Kragen / Collar



Manschette / Cuff

**NOS / 06**

**POLOS · T-SHIRTS**

**LUXOR COMFORT FIT**

**LUXOR MODERN FIT**

**LEVEL FIVE**

**NO. SIX**

**TENDENZ**

**LUCKY BLUSEN / BLOUSES**

**FEUERWEHR / FIRE BRIGADE PILOT**

**ACCESSORIES**

**INFO · CONTACT**



**OLYMP**

LUXOR · Comfort Fit · **Blusen / Blouses**

Art. **0642** Grössen / Sizes **32 - 54**

Uni Halbarm / Short sleeve **1/2**



L 064212 00 Karla

Art. **0622** Grössen / Sizes **32 - 54**

Verdeckte Knopfleiste / Covered button panel Langarm / Long sleeve **1/1**



M 062261 00 Susa



Kragen / Collar



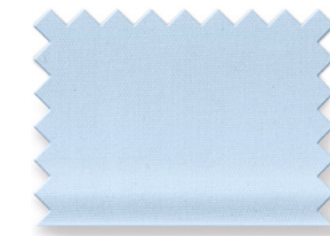
Manschette / Cuff

Art. **0642** Grössen / Sizes **32 - 5**

Uni Langarm / Long sleeve **1/1**



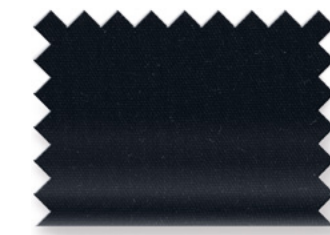
M 064261 00 Karla



M 064261 15 Karla



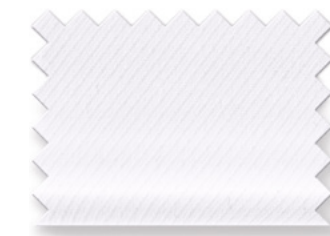
M 064261 18 Karla



M 064261 68 Karla

Art. **0646** Grössen / Sizes **32 - 54**

Twill Langarm / Long sleeve **1/1**



R 064661 00 Karla

- 100 % Baumwolle  
100 % Cotton
- Bügelfrei  
Non-iron
- Atmungsaktiv  
Breathable
- Knitterfrei  
Wrinkle-free
- Offene Kragenform  
Open collar design
- Oeko-Tex® Standard 100  
Nr. 95.0.3008

Legere, nicht einengende, bequeme, leicht taillierte Passform  
Relaxed, comfortable, with freedom of movement and a slightly tailored fit

**OLYMP**



**NOS / 06**

**POLOS · T-SHIRTS**

**LUXOR COMFORT FIT**

**LUXOR MODERN FIT**

**LEVEL FIVE**

**NO. SIX**

**TENDENZ**

**LUCKY BLUSEN /  
BLOUSES**

**FEUERWEHR /  
FIRE BRIGADE PILOT**

**ACCESSORIES**

**INFO · CONTACT**



# OLYMP

## LUXOR

Modern Fit

OLYMP



**NOS / 06**

**POLOS · T-SHIRTS**

**LUXOR COMFORT FIT**

**LUXOR MODERN FIT**

**LEVEL FIVE**

**NO. SIX**

**TENDENZ**

**LUCKY BLUSEN /  
BLOUSES**

**FEUERWEHR /  
FIRE BRIGADE PILOT**

**ACCESSORIES**

**INFO · CONTACT**



SEARCH  
DOCUMENT



WRITE US  
AN EMAIL

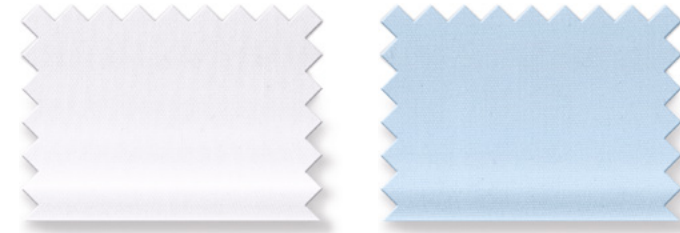


**OLYMP**

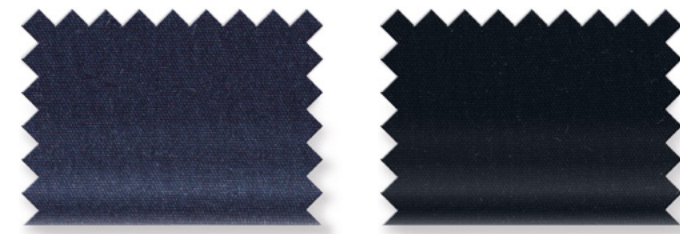
LUXOR · Modern Fit · Hemden / Shirts

Art. **0300 / 0303** Grössen / Sizes **37 - 4**

Uni Halbarm / Short sleeve **1/2**



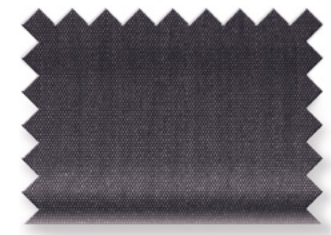
L 030012 00 New Kent L 030312 00 Button-down  
L 030012 15 New Kent



L 030012 18 New Kent L 030012 68 New Kent

Art. **0304** Grössen / Sizes **37 - 48**

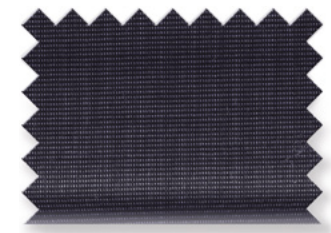
Chambray Halbarm / Short sleeve **1/2**



L 030412 67 New Kent

Art. **0302** Grössen / Sizes **37 - 48**

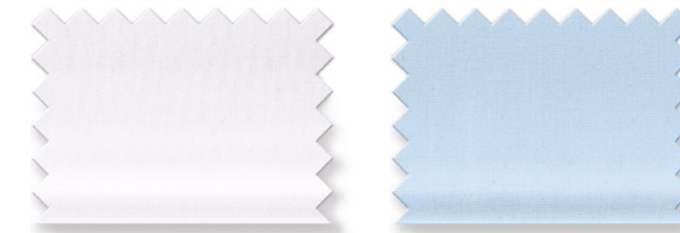
Fil à Fil Halbarm / Short sleeve **1/2**



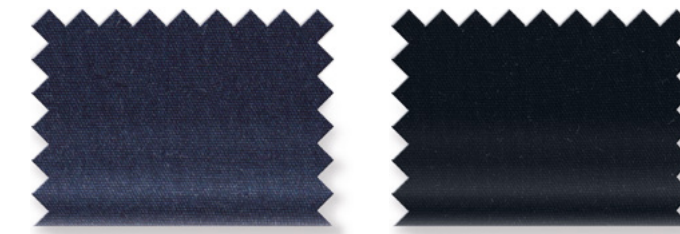
L 030212 68 New Kent

Art. **0300 / 0303** Grössen / Size **37 - 48**

Uni Langarm / Long sleeve **1/1**



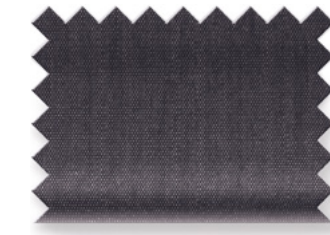
M 03006400 New Kent M 030364 00 Button-down  
M 03006415 New Kent



M 03006418 New Kent M 03006468 New Kent

Art. **0304** Grössen / Sizes **37 - 4**

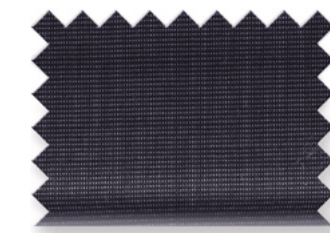
Chambray Langarm / Long sleeve **1/1**



M 030464 67 New Kent

Art. **0302** Grössen / Sizes **37 - 48**

Fil à Fil Langarm / Long sleeve **1/1**



M 030264 68 New Kent

- 100 % Baumwolle / 100 % Cotton
- Bügelfrei / Non-iron
- Atmungsaktiv / Breathable
- Knitterfrei / Wrinkle-free
- Italienische Knopfleiste / Italian button panel
- Verstellbare Manschetten mit Kombi-Funktion / Adjustable cuffs with combi function

Hautsympathisch / Kind to the skin  
Zeitgemäß, modisch taillierte Passform / Fashionably contemporary cut  
Oeko-Tex® Standard 100 Nr. 95.0.3008

**OLYMP**



**NOS / 06**

**POLOS · T-SHIRTS**

**LUXOR COMFORT FIT**

**LUXOR MODERN FIT**

**LEVEL FIVE**

**NO. SIX**

**TENDENZ**

**LUCKY BLUSEN / BLOUSES**

**FEUERWEHR / FIRE BRIGADE PILOT**

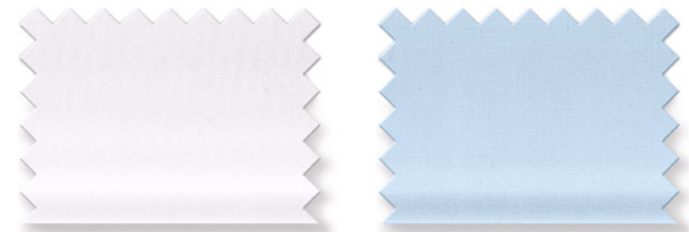
**ACCESSORIES**

**INFO · CONTACT**

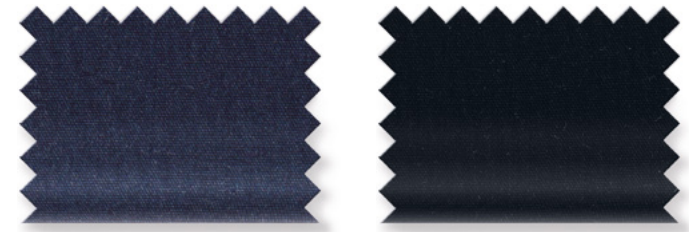


Art. **6350** Grössen / Sizes **37 - 48**

Uni Langarm / Long sleeve **1/1**  
 Ohne Brusttasche / Without chest pocket  
 Kragen kantig gesteppt / Edge topstitching on collar



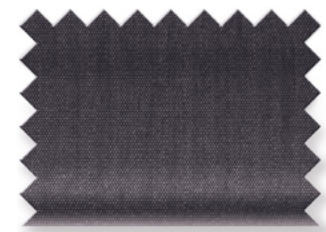
M 635064 00 New York Kent M 635064 15 New York Kent



M 635064 18 New York Kent M 635064 68 New York Kent

Art. **6354** Grössen / Sizes **37 - 48**

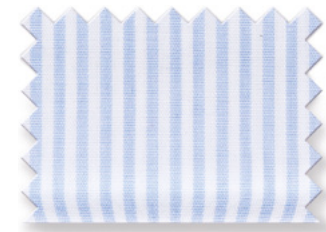
Chambray Langarm / Long sleeve **1/1**  
 Ohne Brusttasche / Without chest pocket  
 Kragen kantig gesteppt / Edge topstitching on collar



M 635464 67 New York Kent

Art. **0314** Grössen / Sizes **37 - 48**

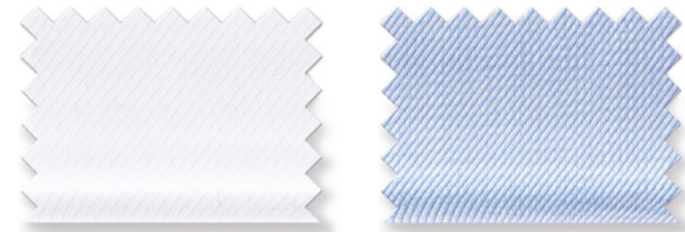
Zündholzstreifen / Fine stripe Langarm / Long sleeve **1/1**



M 031464 11 New Kent

Art. **0745** Grössen / Sizes **37 - 48**

Twill Langarm / Long sleeve **1/1**



R 074564 00 Global Kent R 074564 11 Global Kent

Art. **0447** Grössen / Sizes **37 - 48**

Langarm / Long sleeve **1/1**  
 Ohne Brusttasche / Without chest pocket



R 044764 00 Global Kent



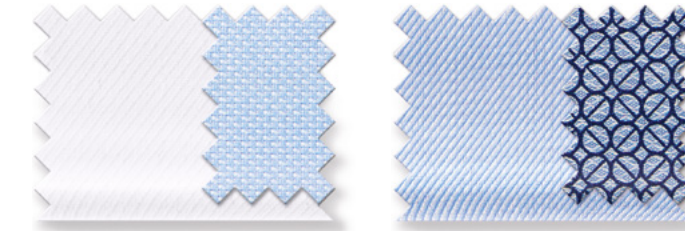
Kragen / Collar



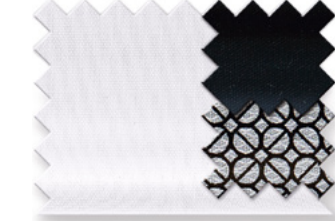
Manschette / Cuff

Art. **0366 / 0363** Grössen / Sizes **37 - 48**

Langarm / Long sleeve **1/1**  
 Ohne Brusttasche / Without chest pocket



R 036664 00 Global Kent R 036664 11 Global Kent



R 036364 00 Global Kent



R 036364 68 Global Kent



Kragen / Collar



Manschette / Cuff

**NOS / 06**

**POLOS · T-SHIRTS**

**LUXOR COMFORT FIT**

**LUXOR MODERN FIT**

**LEVEL FIVE**

**NO. SIX**

**TENDENZ**

**LUCKY BLUSEN / BLOUSES**

**FEUERWEHR / FIRE BRIGADE PILOT**

**ACCESSORIES**

**INFO · CONTACT**



SEARCH DOCUMENT



WRITE US AN EMAIL



100 % Baumwolle  
100 % Cotton



Bügelfrei  
Non-iron



Atmungsaktiv  
Breathable



Knitterfrei  
Wrinkle-free

Italienische Knopfleiste  
Italian button panel

Verstellbare Manschetten mit Kombi-Funktion  
Adjustable cuffs with combi function

Hautsympathisch  
Kind to the skin

Zeitgemäß, modisch taillierte Passform  
Fashionably contemporary cut

Oeko-Tex® Standard 100  
Nr. 95.0.3008

Art. **0300** Grössen / Sizes **37 - 48**

Uni **Extra kurzer Arm / Extra short sleeve** **58**

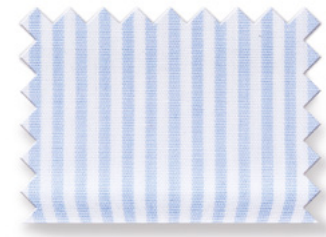


M 03005800 New Kent

Art. **0314** Grössen / Sizes **37 - 48**

**Extra langer Arm / Extra long sleeve** **69**

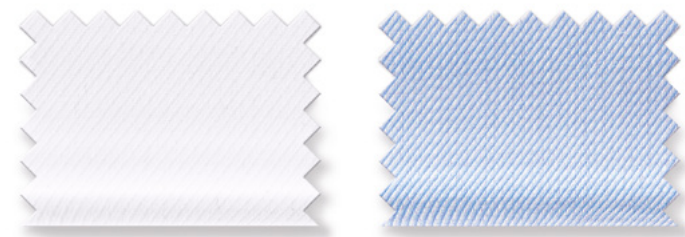
Zündholzstreifen / Fine stripe



M 031469 11 New Kent

Art. **0745** Grössen / Sizes **37 - 48**

Twill **Extra langer Arm / Extra long sleeve** **69**

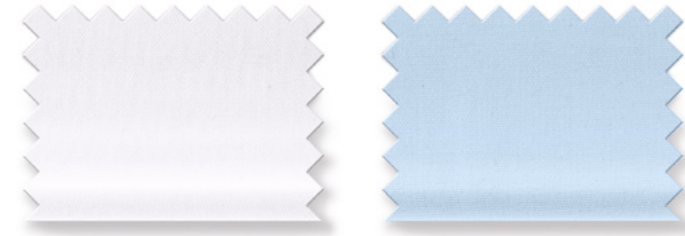


R 074569 00Global Kent

R 074569 11Global Kent

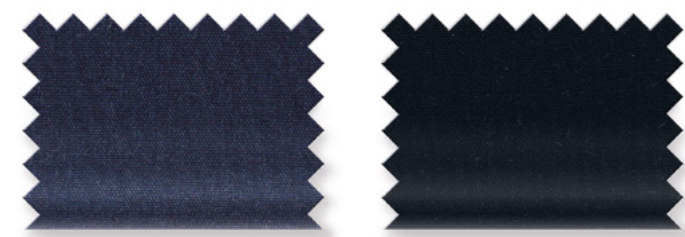
Art. **0300** Grössen / Sizes **37 - 48**

Uni **Extra langer Arm / Extra long sleeve** **69/72**



M 03006900 New Kent  
M 030072 00 New Kent

M 03006915 New Kent

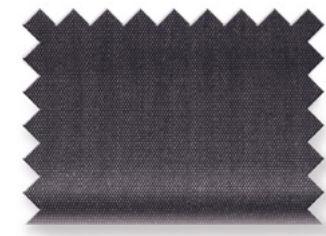


M 03006918 New Kent

M 03006968 New Kent

Art. **0304**Grössen / Sizes **37 - 48**

Chambray **Extra langer Arm / Extra long sleeve** **69**

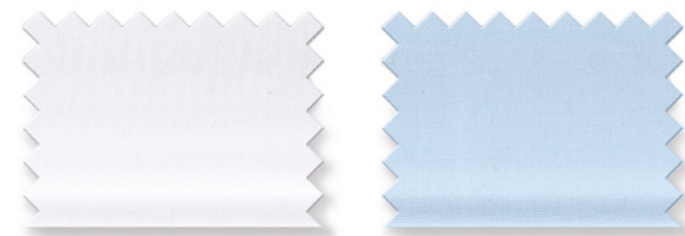


M 030469 67 New Kent

Art. **6350**Grössen / Sizes **37 - 48**

**Extra langer Arm / Extra long sleeve** **69**

Ohne Brusttasche / Without chest pocket



M 635069 00 New Kent

M 635069 15 New Kent

Art. **0447** Grössen / Sizes **37 - 48**

**Extra langer Arm / Extra long sleeve** **69**

Ohne Brusttasche / Without chest pocket



R 044769 00 Global Kent



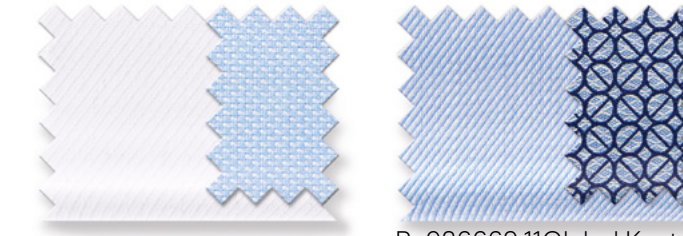
Kragen / Collar



Manschette / Cuff

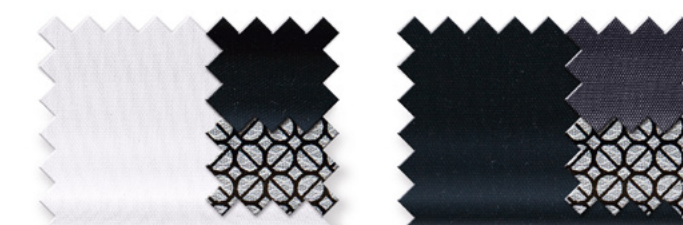
Art. **0366/0363** Grössen / Sizes **37 - 48**

**Extra langer Arm / Extra long sleeve** **69**



R 036669 00 Global Kent

R 036669 11Global Kent



R 036369 00 Global Kent

R 036369 68 Global Kent



Kragen / Collar



Manschette / Cuff

**NOS / 06**

**POLOS · T-SHIRTS**

**LUXOR COMFORT FIT**

**LUXOR MODERN FIT**

**LEVEL FIVE**

**NO. SIX**

**TENDENZ**

**LUCKY BLUSEN / BLOUSES**

**FEUERWEHR / FIRE BRIGADE PILOT**

**ACCESSORIES**

**INFO · CONTACT**



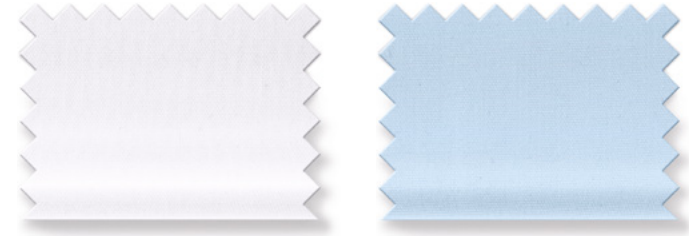
SEARCH DOCUMENT



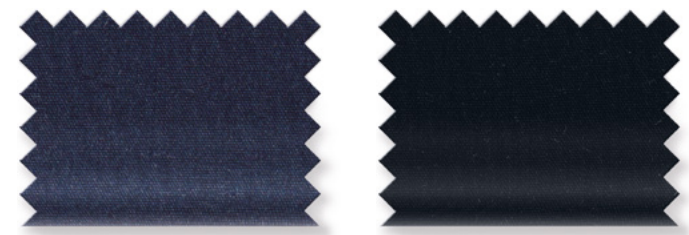
WRITE US AN EMAIL

Art. **0630** Grössen / Sizes **32 - 50**

Uni Halbarm / Short sleeve **1/2**



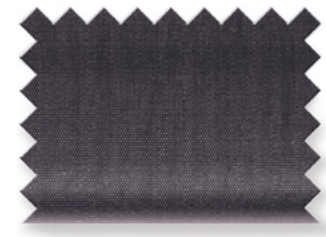
L 063012 00 Carpi L 063012 15 Carpi



L 063012 18 Carpi L 063012 68 Carpi

Art. **0634** Grössen / Sizes **32 - 50**

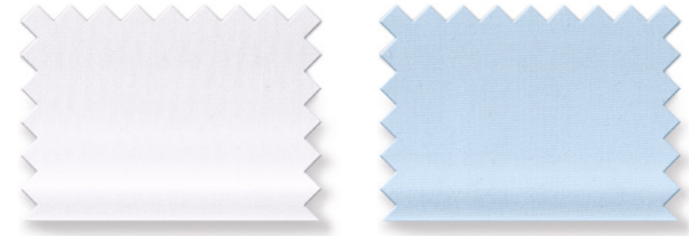
Chambray Halbarm / Short sleeve **1/2**



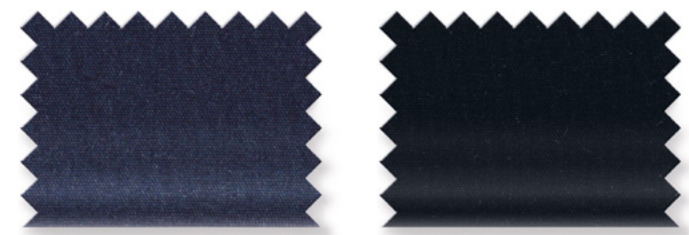
L 063412 67 Carpi

Art. **0630** Grössen / Sizes **32 - 50**

Uni Langarm / Long sleeve **1/1**



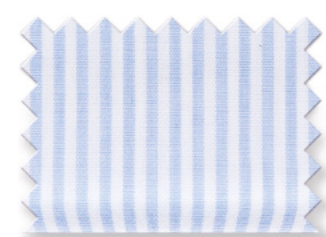
M 063061 00 Carpi M 063061 15 Carpi



M 063061 18 Carpi M 063061 68 Carpi

Art. **0631** Grössen / Sizes **32 - 50**

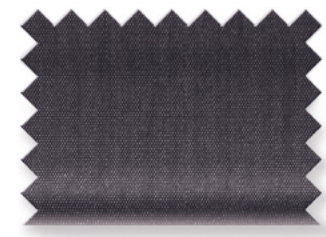
Zündholzstreifen / Fine stripe Langarm / Long sleeve **1/1**



M 063161 11 Carpi

Art. **0634** Grössen / Sizes **32 - 50**

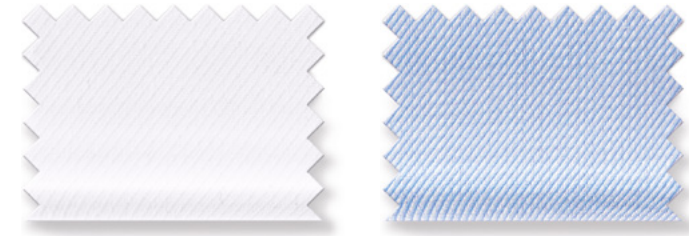
Chambray Langarm / Long sleeve **1/1**



M 063461 67 Carpi

Art. **0637** Grössen / Sizes **32 - 50**

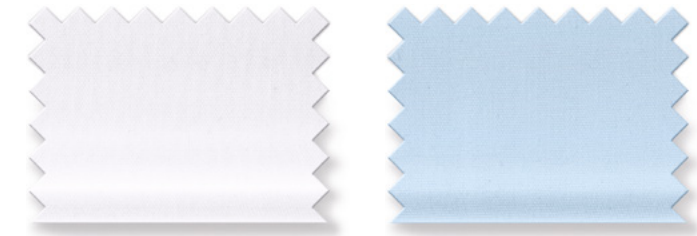
Twill Langarm / Long sleeve **1/1**



R 063761 00 Carpi R 063761 11 Carpi

Art. **0630** Grössen / Sizes **32 - 50**

Uni **Extra langer Arm / Extra long sleeve 66**



M 063066 00 Carpi M 063066 15 Carpi



M 063066 68 Carpi

**NOS / 06**

**POLOS · T-SHIRTS**

**LUXOR COMFORT FIT**

**LUXOR MODERN FIT**

**LEVEL FIVE**

**NO. SIX**

**TENDENZ**

**LUCKY BLUSEN / BLOUSES**

**FEUERWEHR / FIRE BRIGADE PILOT**

**ACCESSORIES**

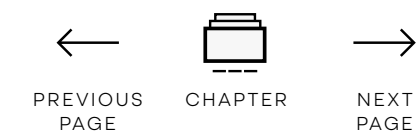
**INFO · CONTACT**

# OLYMP

## LEVEL 5 FIVE

Body Fit

OLYMP



**NOS / 06**

**POLOS · T-SHIRTS**

**LUXOR COMFORT FIT**

**LUXOR MODERN FIT**

**LEVEL FIVE**

**NO. SIX**

**TENDENZ**

**LUCKY BLUSEN /  
BLOUSES**

**FEUERWEHR /  
FIRE BRIGADE PILOT**

**ACCESSORIES**

**INFO · CONTACT**



SEARCH  
DOCUMENT



WRITE US  
AN EMAIL

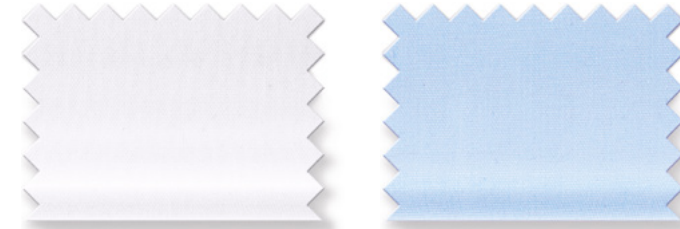




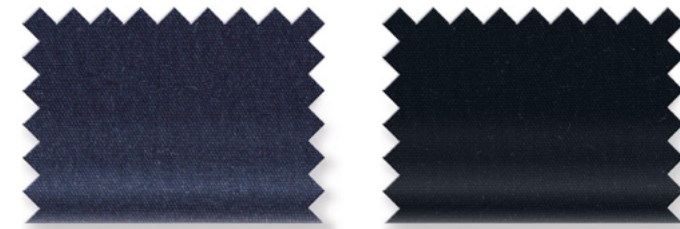
**OLYMP**

LEVEL FIVE · Body Fit · Hemden / Shirts

Art. **6090** Grössen / Sizes **36 - 4**  
 Uni Halbarm / Short sleeve **1/2**

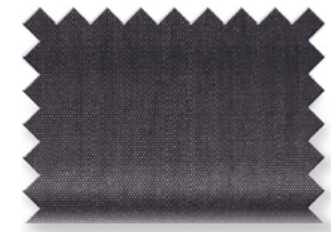


L 609012 00 New York Kent L 609012 15 New York Kent



L 609012 18 New York Kent L 609012 68 New York Kent

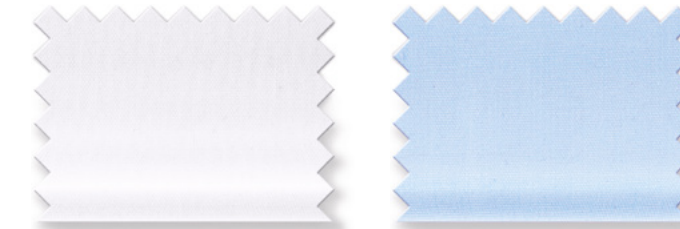
Art. **2080** Grössen / Sizes **36 - 46**  
 Chambray Halbarm / Short sleeve **1/2**



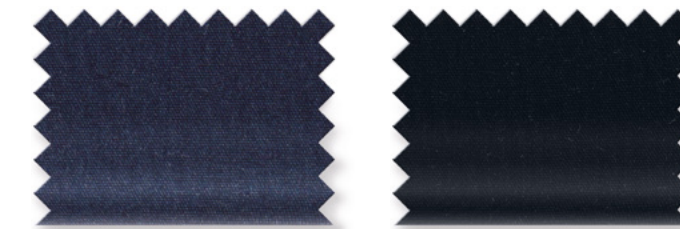
L 208012 67 New York Kent

Minimale Farbabweichung zu OLYMP LUXOR Modern Fit und Comfort Fit /  
 Minimal colour deviation to OLYMP LUXOR Modern Fit and Comfort Fit

Art. **6090** Grössen / Sizes **36 - 46**  
 Uni Langarm / Long sleeve **1/1**

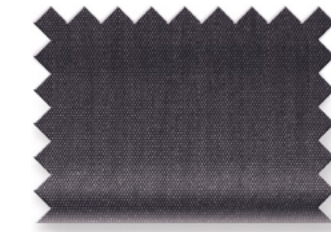


M 609064 00 New York Kent M 609064 15 New York Kent  
 M 609364 00 Button-down



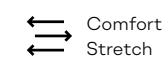
M 609064 18 New York Kent M 609064 68 New York Kent

Art. **2080** Grössen / Sizes **36 - 46**  
 Chambray Langarm / Long sleeve **1/1**



M 208064 67 New York Kent

Minimale Farbabweichung zu OLYMP LUXOR Modern Fit und Comfort Fit /  
 Minimal colour deviation to OLYMP LUXOR Modern Fit and Comfort Fit



Comfort Stretch



Bügelleicht Easy-iron

97% Baumwolle / 3% Elastolefin  
 97% cotton / 3% elastolefin

Abnäher im Rücken  
 Darted at the back

Schmale Knopfleiste  
 Narrow button panel

Verstellbare Manschetten  
 Adjustable cuffs

Formbeständig  
 Shape-retaining

Körpernahe taillierte Passform  
 Body-hugging, tapered fit

Oeko-Tex® Standard 100  
 Nr. 95.0.3008

**OLYMP**



**NOS / 06**

**POLOS · T-SHIRTS**

**LUXOR COMFORT FIT**

**LUXOR MODERN FIT**

**LEVEL FIVE**

**NO. SIX**

**TENDENZ**

**LUCKY BLUSEN /  
 BLOUSES**

**FEUERWEHR /  
 FIRE BRIGADE PILOT**

**ACCESSORIES**

**INFO · CONTACT**



SEARCH DOCUMENT



WRITE US AN EMAIL

Art. **0492** Grössen / Sizes **36 - 46**  
Langarm / Long sleeve **1/1**



R 049264 00 Global Kent

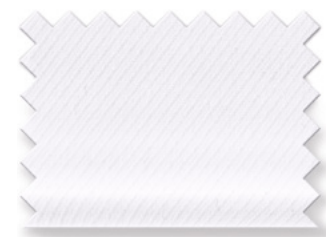


Kragen / Collar

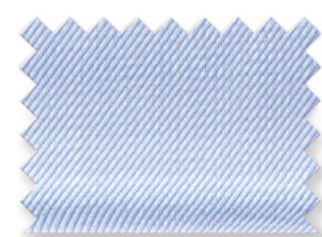


Manschette / Cuff

Art. **0762** Grössen / Sizes **36 - 46**  
Twill Langarm / Long sleeve **1/1**

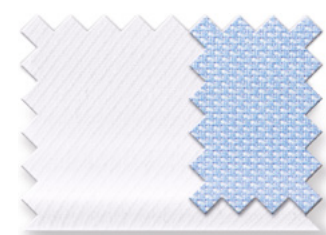


R 076264 00 New York Kent

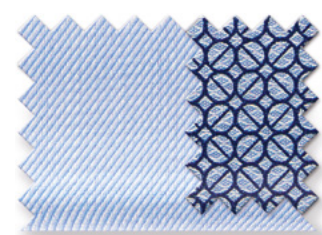


R 076264 11 New York Kent

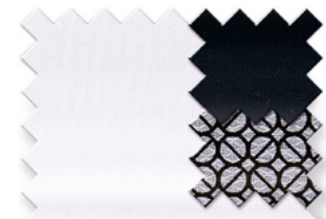
Art. **0468 / 0469** Grössen / Sizes **36 - 46**  
Langarm / Long sleeve **1/1**



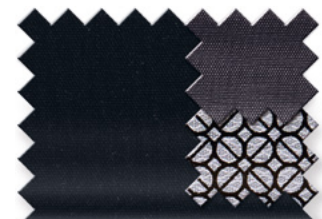
R 046864 00 Global Kent



R 046864 11 Global Kent



R 046964 00 Global Kent



R 046964 68 Global Kent



Kragen / Collar



Manschette / Cuff

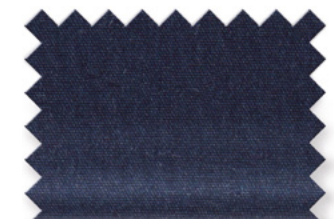
Art. **6090** Grössen / Sizes **38 - 46**  
Extra langer Arm / Extra long sleeve **69**



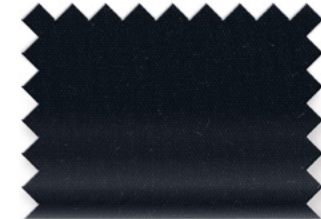
M 609069 00 New York Kent



M 609069 15 New York Kent

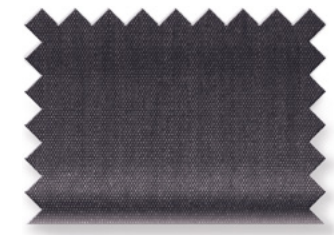


M 609069 18 New York Kent



M 609069 68 New York Kent

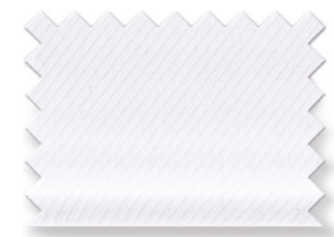
Art. **2080** Grössen / Sizes **38 - 46**  
Chambray Extra langer Arm / Extra long sleeve **69**



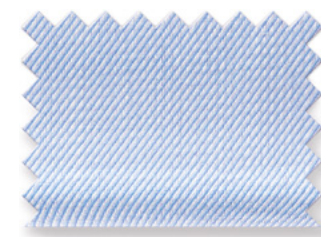
M 208069 67 New York Kent

Minimale Farbabweichung zu OLYMP LUXOR Modern Fit und Comfort Fit / Minimal colour deviation to OLYMP LUXOR Modern Fit and Comfort Fit

Art. **0762** Grössen / Sizes **38 - 46**  
Twill Extra langer Arm / Extra long sleeve **69**



R 076269 00 New York Kent



R 076269 11 New York Kent

Art. **0492** Grössen / Sizes **38 - 46**  
Extra langer Arm / Extra long



R 049269 00 Global Kent

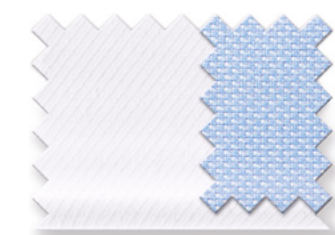


Kragen / Collar

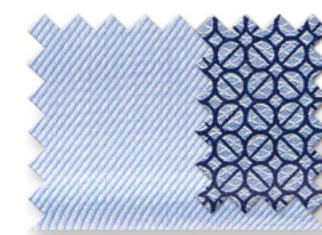


Manschette / Cuff

Art. **0468** Grössen / Sizes **38 - 46**  
Extra langer Arm / Extra long sleeve **69**

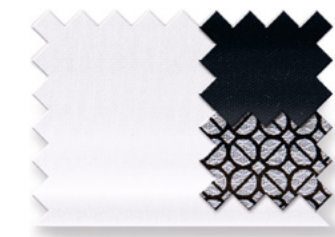


R 046869 00 Global Kent

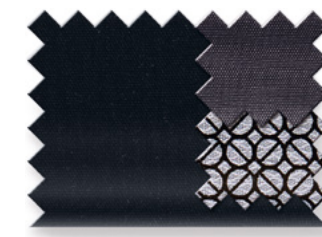


R 046869 11 Global Kent

Art. **0469** Grössen / Sizes **38 - 46**  
Extra langer Arm / Extra long sleeve **69**



R 046969 00 Global Kent



R 046969 68 Global Kent



Kragen / Collar



Manschette / Cuff

**NOS / 06**

**POLOS · T-SHIRTS**

**LUXOR COMFORT FIT**

**LUXOR MODERN FIT**

**LEVEL FIVE**

**NO. SIX**

**TENDENZ**

**LUCKY BLUSEN / BLOUSES**

**FEUERWEHR / FIRE BRIGADE PILOT**

**ACCESSORIES**

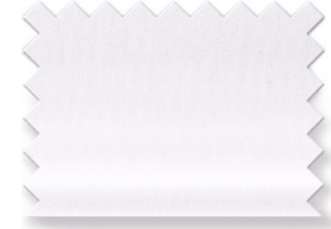
**INFO · CONTACT**



**OLYMP**

LEVEL FIVE · Body Fit · **Blusen / Blouses**

Art. **0606** Grössen / Sizes **32 - 46**  
Halbarm / Short sleeve **1/2**



L 060612 00 Arezzo

Art. **0606** Grössen / Sizes **32 - 46**  
Langarm / Long sleeve **1/1**



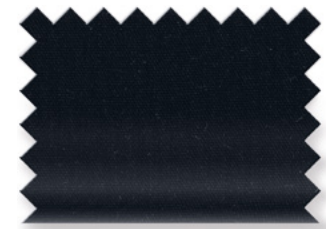
M 060661 00 Arezzo



M 060661 15 Arezzo

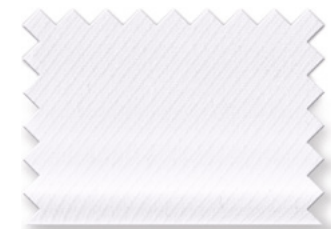


M 060661 18 Arezzo



M 060661 68 Arezzo

Art. **0609** Grössen / Sizes **32 - 46**  
Twill Langarm / Long sleeve **1/1**



R 060961 00 Arezzo

Art. **0606** Grössen / Sizes **32 - 46**  
**Extra langer Arm / Extra long sleeve 66**



M 06066600 Arezzo

↔ Comfort Stretch



Bügelleicht Easy-iron

97 % Baumwolle / 3 % Elastolefin  
97 % cotton / 3 % elastolefin

Geschlossene Kragenform  
Closed collar design.

Körperbetonte, stark taillierte Passform  
Body-hugging, tapered fit

Oeko-Tex® Standard 100  
Nr. 95.0.3008

**OLYMP**

← PREVIOUS PAGE    CHAPTER    → NEXT PAGE

**NOS / 06**

**POLOS · T-SHIRTS**

**LUXOR COMFORT FIT**

**LUXOR MODERN FIT**

**LEVEL FIVE**

**NO. SIX**

**TENDENZ**

**LUCKY BLUSEN / BLOUSES**

**FEUERWEHR / FIRE BRIGADE PILOT**

**ACCESSORIES**

**INFO · CONTACT**



SEARCH DOCUMENT



WRITE US AN EMAIL

# OLYMP

## NO. 6 SIX

Super Slim

OLYMP



**NOS / 06**

**POLOS · T-SHIRTS**

**LUXOR COMFORT FIT**

**LUXOR MODERN FIT**

**LEVEL FIVE**

**NO. SIX**

**TENDENZ**

**LUCKY BLUSEN /  
BLOUSES**

**FEUERWEHR /  
FIRE BRIGADE PILOT**

**ACCESSORIES**

**INFO · CONTACT**



SEARCH  
DOCUMENT



WRITE US  
AN EMAIL



**OLYMP**

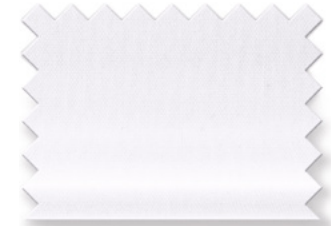
NO. SIX · Super Slim · Hemden / Shirts

Art. **0466**

Größen / Sizes **36 - 44**

Uni

Langarm / Long sleeve **1/1**



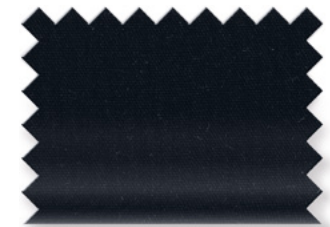
M 046664 00 Urban Kent



M 046664 15 Urban Kent



M 046664 18 Urban Kent



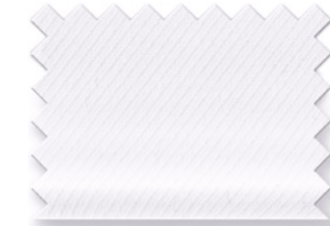
M 046664 68 Urban Kent

Art. **0777**

Größen / Sizes **36 - 44**

Twill

Langarm / Long sleeve **1/1**



R 077764 00 Urban Kent

Art. **0499**

Größen / Sizes **36 - 44**

Langarm / Long sleeve **1/1**



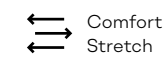
R 049964 00 Urban Kent



Kragen / Collar



Manschette / Cuff



Comfort Stretch



Bügelleicht Easy-iron

97% Baumwolle / 3% Elastolefin  
97% cotton / 3% elastolefin

Abnäher im Rücken  
Shape-retaining

Verstellbare Manschetten  
Adjustable cuffs

Formbeständig  
Shape-retaining

Stark taillierte, körpernahe Passform  
Close-fitting, heavily tapered cut

Oeko-Tex® Standard 100  
Nr. 95.0.3008

**OLYMP**



**NOS / 06**

**POLOS · T-SHIRTS**

**LUXOR COMFORT FIT**

**LUXOR MODERN FIT**

**LEVEL FIVE**

**NO. SIX**

**TENDENZ**

**LUCKY BLUSEN / BLOUSES**

**FEUERWEHR / FIRE BRIGADE PILOT**

**ACCESSORIES**

**INFO · CONTACT**



SEARCH DOCUMENT



WRITE US AN EMAIL

Art. **0466**

Größen / Sizes **36 - 44**

Uni **Extra langer Arm / Extra long sleeve** **69**



M 046669 00 Urban Kent

M 046669 15 Urban Kent



M 046669 68 Urban Kent

↔ Comfort Stretch

👉 Bügelleicht Easy-iron

97 % Baumwolle / 3 % Elastolefin  
97 % cotton / 3 % elastolefin

Abnäher im Rücken  
Shape-retaining

Verstellbare Manschetten  
Adjustable cuffs

Formbeständig  
Shape-retaining

Stark taillierte, körpernahe Passform  
Close-fitting, heavily tapered cut

Oeko-Tex® Standard 100  
Nr. 95.0.3008



← PREVIOUS PAGE    CHAPTER    → NEXT PAGE

**NOS / 06**

**POLOS · T-SHIRTS**

**LUXOR COMFORT FIT**

**LUXOR MODERN FIT**

**LEVEL FIVE**

**NO. SIX**

**TENDENZ**

**LUCKY BLUSEN /  
BLOUSES**

**FEUERWEHR /  
FIRE BRIGADE PILOT**

**ACCESSORIES**

**INFO · CONTACT**

🔍 SEARCH DOCUMENT

✉ WRITE US AN EMAIL

# OLYMP

## TENDENZ

Modern Fit

OLYMP



**NOS / 06**

**POLOS · T-SHIRTS**

**LUXOR COMFORT FIT**

**LUXOR MODERN FIT**

**LEVEL FIVE**

**NO. SIX**

**TENDENZ**

**LUCKY BLUSEN /  
BLOUSES**

**FEUERWEHR /  
FIRE BRIGADE PILOT**

**ACCESSORIES**

**INFO · CONTACT**



SEARCH  
DOCUMENT



WRITE US  
AN EMAIL



**OLYMP**

TENDENZ · Modern Fit · Hemden / Shirts

Art. **0513** Grössen / Sizes **36 - 50**

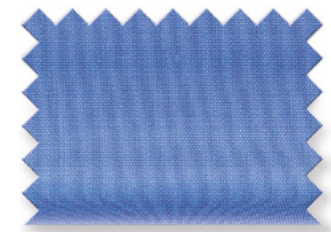
Uni Halbarm / Short sleeve **1/2**



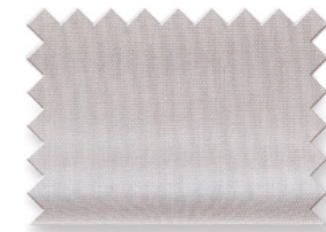
S 051312 00 New Kent



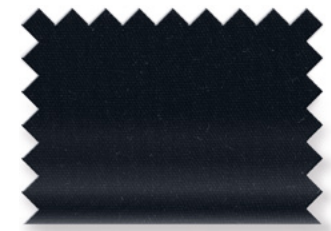
S 051312 11 New Kent



S 051312 15 New Kent



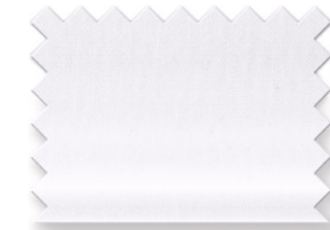
S 051312 63 New Kent



S 051312 68 New Kent

Art. **0513** Grössen / Sizes **36 - 50**

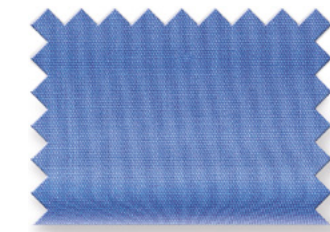
Uni Langarm / Long sleeve **1/1**



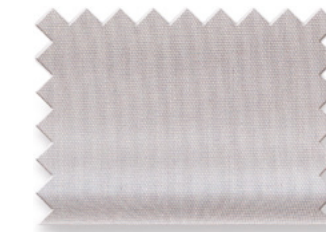
T 051364 00 New Kent



T 051364 11 New Kent



T 051364 15 New Kent



T 051364 63 New Kent



T 051364 68 New Kent

**OLYMP**



**NOS / 06**

**POLOS · T-SHIRTS**

**LUXOR COMFORT FIT**

**LUXOR MODERN FIT**

**LEVEL FIVE**

**NO. SIX**

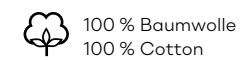
**TENDENZ**

**LUCKY BLUSEN /  
BLOUSES**

**FEUERWEHR /  
FIRE BRIGADE PILOT**

**ACCESSORIES**

**INFO · CONTACT**



100 % Baumwolle  
100 % Cotton



Bügelleicht  
Easy-iron

Verstellbare Manschetten, abgerundete Form  
Adjustable cuffs, rounded shape

Lose gelegt (ohne Legepappe, ohne Nadeln)  
Loosely folded (without cardboard, without pins)

Für Mietwäsche geeignet  
Suitable for hire linen

Soft und hautsympathisch  
Soft and kind to the skin

Klassisch bequeme Passform  
Classic comfortable fit

Oeko-Tex® Standard 100  
Nr. 95.0.3008



SEARCH  
DOCUMENT



WRITE US  
AN EMAIL





**OLYMP**

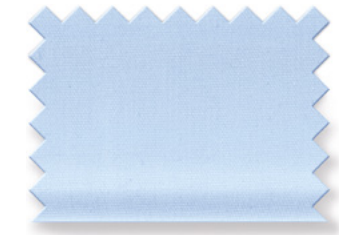
TENDENZ · Comfort Fit · **Blusen / Blouses**

Art. **0650** Grössen / Sizes **32 - 54**

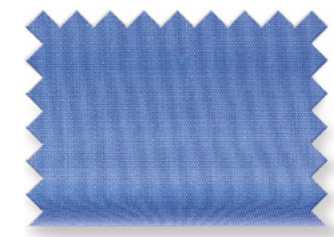
Uni Halbarm / Short sleeve **1/2**



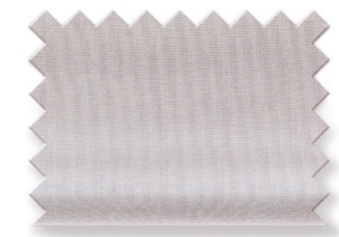
S 065012 00 Luisa



S 065012 11 Luisa



S 065012 15 Luisa



S 065012 63 Luisa



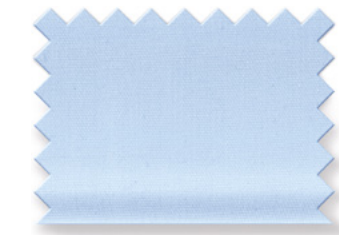
S 065012 68 Luisa

Art. **0650** Grössen / Sizes **32 - 54**

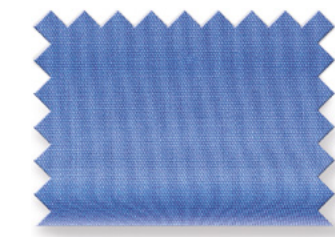
Uni Langarm / Long sleeve **1/1**



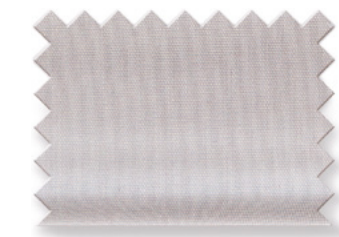
T 065061 00 Luisa



T 065061 11 Luisa



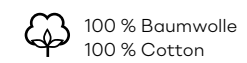
T 065061 15 Luisa



T 065061 63 Luisa



T 065061 68 Luisa



Geschlossene Kragenform  
Closed collar design.

Legere, nicht einengende, bequeme, leicht taillierte Passform  
Relaxed, comfortable, with freedom of movement and a slightly tailored fit

Oeko-Tex® Standard 100  
Nr. 95.0.3008

**OLYMP**



**NOS / 06**

**POLOS · T-SHIRTS**

**LUXOR COMFORT FIT**

**LUXOR MODERN FIT**

**LEVEL FIVE**

**NO. SIX**

**TENDENZ**

**LUCKY BLUSEN /  
BLOUSES**

**FEUERWEHR /  
FIRE BRIGADE PILOT**

**ACCESSORIES**

**INFO · CONTACT**



# OLYMP

Lucky Blusen / Blouses

OLYMP



**NOS / 06**

**POLOS · T-SHIRTS**

**LUXOR COMFORT FIT**

**LUXOR MODERN FIT**

**LEVEL FIVE**

**NO. SIX**

**TENDENZ**

**LUCKY BLUSEN /  
BLOUSES**

**FEUERWEHR /  
FIRE BRIGADE PILOT**

**ACCESSORIES**

**INFO · CONTACT**



SEARCH  
DOCUMENT



WRITE US  
AN EMAIL



**OLYMP**

Lucky Blusen / Blouses

Art. **0683**

Größen / Sizes **32 - 50**

Langarm / Long sleeve **1/1**



R 068361 00 Greta



Kragen / Collar

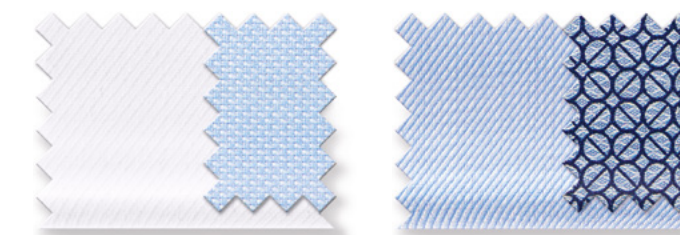


Manschette / Cuff

Art. **0681**

Größen / Sizes **32 - 50**

Langarm / Long sleeve **1/1**



R 068161 00 Greta

R 068161 11 Greta

**OLYMP**



**NOS / 06**

**POLOS · T-SHIRTS**

**LUXOR COMFORT FIT**

**LUXOR MODERN FIT**

**LEVEL FIVE**

**NO. SIX**

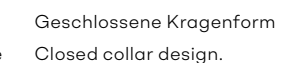
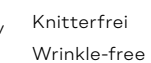
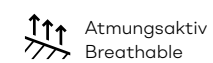
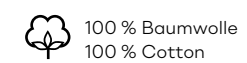
**TENDENZ**

**LUCKY BLUSEN /  
BLOUSES**

**FEUERWEHR /  
FIRE BRIGADE PILOT**

**ACCESSORIES**

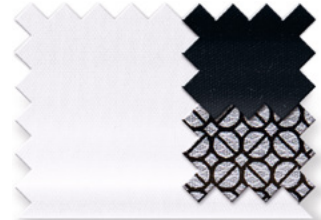
**INFO · CONTACT**



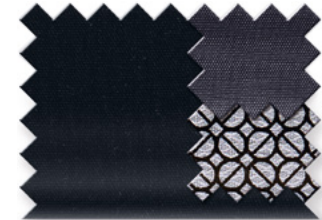
Art. **0682**

Größen / Sizes **32 - 50**

Langarm / Long sleeve **1/1**



R 068261 00 Greta



R 068261 68 Greta



Kragen / Collar



Manschette / Cuff



**NOS / 06**

**POLOS · T-SHIRTS**

**LUXOR COMFORT FIT**

**LUXOR MODERN FIT**

**LEVEL FIVE**

**NO. SIX**

**TENDENZ**

**LUCKY BLUSEN / BLOUSES**

**FEUERWEHR / FIRE BRIGADE PILOT**

**ACCESSORIES**

**INFO · CONTACT**

# OLYMP

Feuerwehr / Fire brigade · Pilot

OLYMP



**NOS / 06**

**POLOS · T-SHIRTS**

**LUXOR COMFORT FIT**

**LUXOR MODERN FIT**

**LEVEL FIVE**

**NO. SIX**

**TENDENZ**

**LUCKY BLUSEN /  
BLOUSES**

**FEUERWEHR /  
FIRE BRIGADE PILOT**

**ACCESSORIES**

**INFO · CONTACT**



SEARCH  
DOCUMENT



WRITE US  
AN EMAIL



Schultertunnel / Shoulder tunnel  
Feuerwehr / Fire brigade



Schulterklappen / Shoulder epaulettes · Pilot

# OLYMP

Feuerwehr / Fire brigade · Hemden / Shirts

Art. **0939** Grössen / Sizes **44 - 50 / 52 + 54**

**Comfort Fit** Halbarm / Short sleeve **1/2**



J 093912 00 Elbe



J 093912 11 Elbe



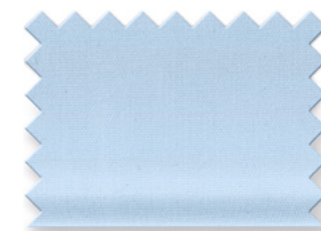
J 093912 18 Elbe

Art. **0932** Grössen / Sizes **36 - 48**

**Modern Fit** Halbarm / Short sleeve **1/2**



J 093212 00 Elbe



J 093212 11 Elbe



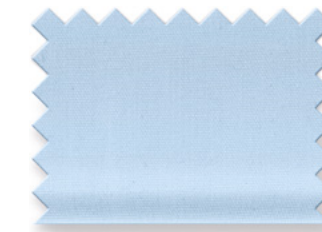
J 093212 18 Elbe

Art. **0938** Grössen / Sizes **44 - 50 / 52 + 54**

**Comfort Fit** Langarm / Long sleeve **1/1**



K 093864 00 Kent



K 093864 11 Kent



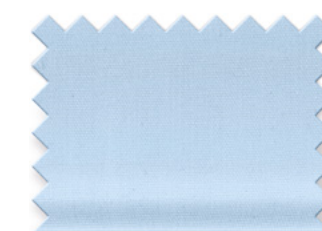
K 093864 18 Kent

Art. **0931** Grössen / Sizes **36 - 4**

**Modern Fit** Langarm / Long sleeve **1/1**



K 093164 00 Kent



K 093164 11 Kent



K 093164 18 Kent

84 % Baumwolle / 16 % Polyester  
84 % cotton / 16 % polyester



Bügelleicht  
Easy-iron

Schultertunnel · Feuerwehr / Schulterklappen · Pilot  
Shoulder tunnel · Fire brigade / Shoulder epaulettes · Pilot

Sportmanschetten  
Sports cuffs

Weicher Kragen  
Soft collar

Zwei Brusttaschen mit Patten  
Two chest pockets with flaps

Linke Tasche mit Schnelleinschubvorrichtung für Kugelschreiber  
Left pocket with slot for pens

Bequeme Passform  
Comfortable fit

Oeko-Tex® Standard 100  
Nr. 95.0.3008

# OLYMP



**NOS / 06**

**POLOS · T-SHIRTS**

**LUXOR COMFORT FIT**

**LUXOR MODERN FIT**

**LEVEL FIVE**

**NO. SIX**

**TENDENZ**

**LUCKY BLUSEN /  
BLOUSES**

**FEUERWEHR /  
FIRE BRIGADE PILOT**

**ACCESSORIES**

**INFO · CONTACT**



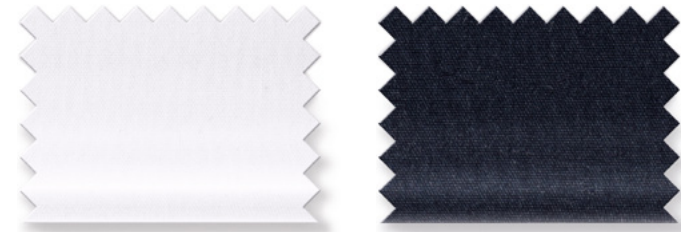
SEARCH  
DOCUMENT



WRITE US  
AN EMAIL

Art. **0931** Grössen / Sizes **36 - 48**

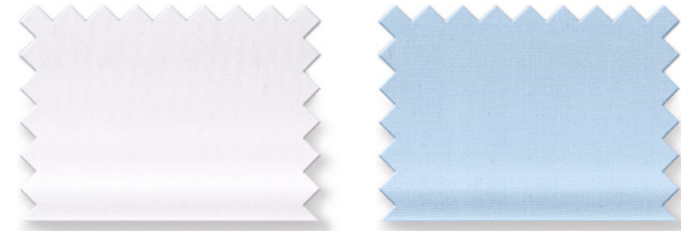
**Modern Fit** Extra kurzer Arm / Extra short sleeve **58**



K 093158 00 Kent K 093158 18 Kent

Art. **0931** Grössen / Sizes **38 - 48**

**Modern Fit** Extra langer Arm / Extra long sleeve **69**



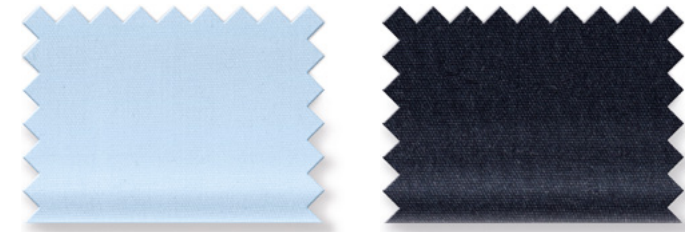
K 093169 00 Kent K 093169 11 Kent



K 093169 18 Kent

Art. **0937** Grössen / Sizes **32 - 52**

**Tailliert** Halbarm / Short sleeve **1/2**



J 093712 11 Elbe J 093712 18 Elbe

Art. **0935** Grössen / Sizes **32 - 52**

**Tailliert** Halbarm / Short sleeve **1/2**  
100 % Baumwolle / 100% Cotton



L 093512 00 Elbe

Art. **0799**

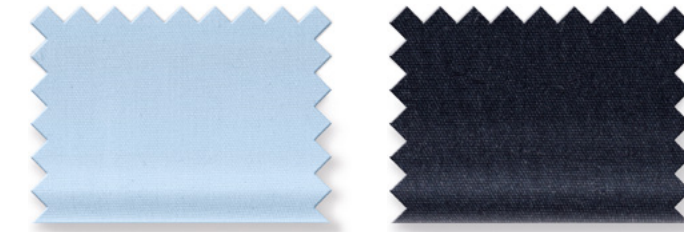
Paarweise Adapter für Schultertunnel, Gewebe siehe oben / Pair adapter for shoulder tunnel, fabric above



079901 00  
079901 11  
079901 18

Art. **0936** Grössen / Sizes **32 - 52**

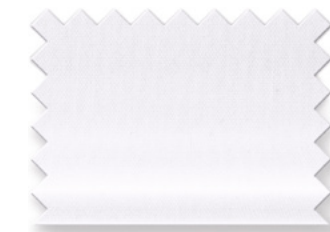
**Tailliert** Langarm / Long sleeve **1/1**



K 093661 11 Kent K 093661 18 Kent

Art. **0930** Grössen / Sizes **32 - 52**

**Tailliert** Langarm / Long sleeve **1/1**  
100 % Baumwolle / 100% Cotton



M 093061 00 Kent



**NOS / 06**

**POLOS · T-SHIRTS**

**LUXOR COMFORT FIT**

**LUXOR MODERN FIT**

**LEVEL FIVE**

**NO. SIX**

**TENDENZ**

**LUCKY BLUSEN /  
BLOUSES**

**FEUERWEHR /  
FIRE BRIGADE PILOT**

**ACCESSORIES**

**INFO · CONTACT**



SEARCH  
DOCUMENT



WRITE US  
AN EMAIL



Bügelleicht  
Easy-iron

Schultertunnel · Feuerwehr / Schulterklappen · Pilot  
Shoulder tunnel · Fire brigade / Shoulder epaulettes · Pilot

Sportmanschetten Weicher Kragen  
Sports cuffs Soft collar

Zwei Brusttaschen mit Patten  
Two chest pockets with flaps

Linke Tasche mit Schnelleinschubvorrichtung für Kugelschreiber  
Left pocket with slot for pens

Bequeme Passform  
Comfortable fit

Oeko-Tex® Standard 100  
Nr. 95.0.3008



Schultertunnel / Shoulder tunnel  
Feuerwehr / Fire brigade



Schulterklappen / Shoulder epaulettes · Pilot

# OLYMP

Pilot · Hemden / Shirts

Art. **0830** Grössen / Sizes **44 - 50**

**Comfort Fit - City 112** Halbarm / Short sleeve **1/2**



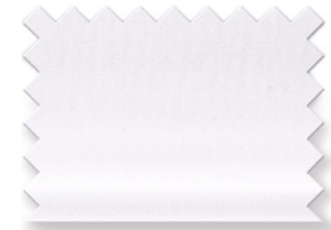
J 083012 00 Kent



J 0830-12-11 Kent  
ab Gr. 37

Art. **0831** Grössen / Sizes **38 - 46 + 48**

**Modern Fit** Halbarm / Short sleeve **1/2**



J 083112 00 New Kent

Art. **0832** Grössen / Sizes **36 - 42**

**Body Fit** Halbarm / Short sleeve **1/2**



J 083212 00 New Kent

Art. **0780** Grössen / Sizes **44 - 50**

**Comfort Fit - City 112** Langarm / Long sleeve **1/1**



K 078064 00 Kent



K 0780-64-11 Kent  
ab Gr. 37

Art. **0781** Grössen / Sizes **38 - 46 + 48**

**Modern Fit** Langarm / Long sleeve **1/1**



K 078164 00 New Kent

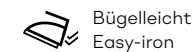
Art. **0782** Grössen / Sizes **36 - 42**

**Body Fit** Langarm / Long sleeve **1/1**



K 078264 00 New Kent

84 % Baumwolle / 16 % Polyester  
84 % cotton / 16 % polyester



Bügelleicht  
Easy-iron

Schultertunnel · Feuerwehr / Schulterklappen · Pilot  
Shoulder tunnel · Fire brigade / Shoulder epaulettes · Pilot

Sportmanschetten  
Sports cuffs

Weicher Kragen  
Soft collar

Zwei Brusttaschen mit Patten  
Two chest pockets with flaps

Linke Tasche mit Schnelleinschubvorrichtung für Kugelschreiber  
Left pocket with slot for pens

Bequeme Passform  
Comfortable fit

Oeko-Tex® Standard 100  
Nr. 95.0.3008

# OLYMP



**NOS / 06**

**POLOS · T-SHIRTS**

**LUXOR COMFORT FIT**

**LUXOR MODERN FIT**

**LEVEL FIVE**

**NO. SIX**

**TENDENZ**

**LUCKY BLUSEN /  
BLOUSES**

**FEUERWEHR /  
FIRE BRIGADE PILOT**

**ACCESSORIES**

**INFO · CONTACT**



SEARCH  
DOCUMENT



WRITE US  
AN EMAIL



Art. **0781** Grössen / Sizes **38 - 46 + 48**

**Modern Fit** **Extra langer Arm / Extra long sleeve** **69**



K 078169 00 New Kent

Art. **9289** Grössen / Sizes **32 - 48**

Halbarm / Short sleeve **1/2**



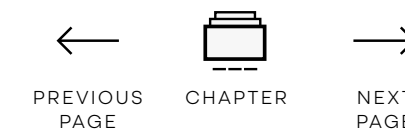
J 928912 00 Kent

Art. **9289** Grössen / Sizes **32 - 48**

Langarm / Long sleeve **1/1**



K 928961 00 Kent



**NOS / 06**

**POLOS · T-SHIRTS**

**LUXOR COMFORT FIT**

**LUXOR MODERN FIT**

**LEVEL FIVE**

**NO. SIX**

**TENDENZ**

**LUCKY BLUSEN /  
BLOUSES**

**FEUERWEHR /  
FIRE BRIGADE PILOT**

**ACCESSORIES**

**INFO · CONTACT**

# OLYMP

Accessories

OLYMP



**NOS / 06**

**POLOS · T-SHIRTS**

**LUXOR COMFORT FIT**

**LUXOR MODERN FIT**

**LEVEL FIVE**

**NO. SIX**

**TENDENZ**

**LUCKY BLUSEN /  
BLOUSES**

**FEUERWEHR /  
FIRE BRIGADE PILOT**

**ACCESSORIES**

**INFO · CONTACT**



SEARCH  
DOCUMENT



WRITE US  
AN EMAIL



**OLYMP**

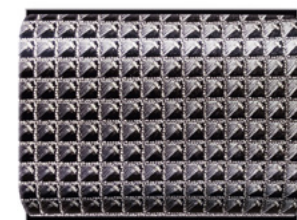
Accessories · Krawatten / Ties

Art. **1792** Breite / Width **6,5 cm**

Slim  
Reine Seide / Pure silk



C 179200 18



C 179200 67

Art. **1789** Breite / Width **6,5 cm**

Slim  
Reine Seide / Pure silk



C 178900 18

Art. **1790** Breite / Width **6,5 cm**

Slim  
Reine Seide / Pure silk

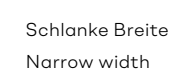
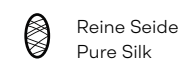


D 179000 13

**OLYMP**



- NOS / 06**
- POLOS · T-SHIRTS**
- LUXOR COMFORT FIT**
- LUXOR MODERN FIT**
- LEVEL FIVE**
- NO. SIX**
- TENDENZ**
- LUCKY BLUSEN / BLOUSES**
- FEUERWEHR / FIRE BRIGADE PILOT**
- ACCESSORIES**
- INFO · CONTACT**



# OLYMP

Info · Contact

**OLYMP**



**NOS / 06**

**POLOS · T-SHIRTS**

**LUXOR COMFORT FIT**

**LUXOR MODERN FIT**

**LEVEL FIVE**

**NO. SIX**

**TENDENZ**

**LUCKY BLUSEN /  
BLOUSES**

**FEUERWEHR /  
FIRE BRIGADE PILOT**

**ACCESSORIES**

**INFO · CONTACT**



SEARCH  
DOCUMENT



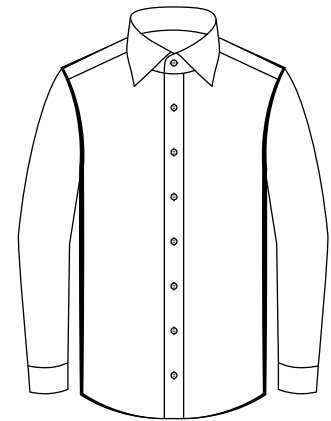
WRITE US  
AN EMAIL



COMFORT FIT

Die klassisch bequeme Passform zeichnet sich durch eine sehr komfortable Schnittführung aus.

This classic comfortable fit is characterised by a very comfortable cut.



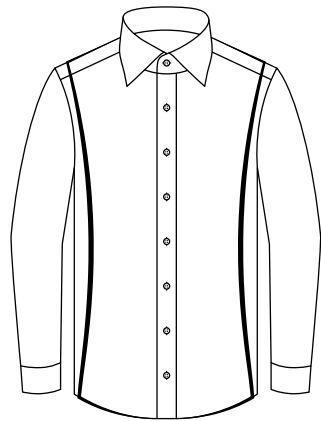
Kragenweite	Oberweite	Taillenweite	Hemdlänge	Hemdlänge bei AL 69
Neck	Chest	Waist	Length	Length Extra long sleeve
36	-	-	-	-
37-38	-	-	-	-
39-40	122	118	80	84
41-42	128	124	82	86
43-44	134	132	82	86
45-46	140	140	84	88
47-48	148	148	84	88
49-50	156	156	86	-
52	164	164	86	-
54	172	172	88	-



MODERN FIT

Die modisch zeitgemäße Schnittform mit ihrer leichten Taillierung einer schmalen Silhouette.

This fashionably contemporary cut with its gentle tapering corresponds to a slim silhouette.



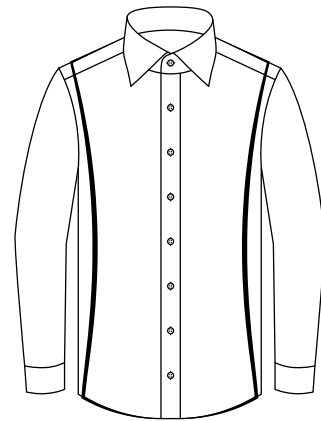
Kragenweite	Oberweite	Taillenweite	Hemdlänge	Hemdlänge bei AL 69
Neck	Chest	Waist	Length	Length Extra long sleeve
36	108	98	80	-
37-38	114	102	80	84
39-40	120	106	80	84
41-42	126	112	82	86
43-44	132	122	82	86
45-46	138	130	84	88
47-48	144	138	84	88
49-50	152	146	86	-



MODERN FIT

Die modisch zeitgemäße Schnittform mit ihrer leichten Taillierung einer schmalen Silhouette.

This fashionably contemporary cut with its gentle tapering corresponds to a slim silhouette.



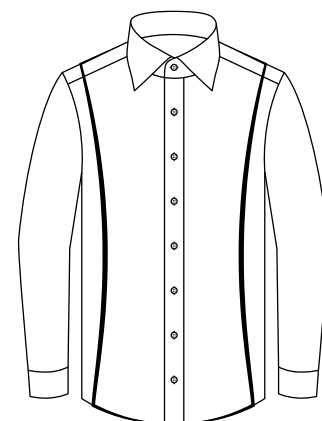
Kragenweite	Oberweite	Taillenweite	Hemdlänge	Hemdlänge bei AL 69
Neck	Chest	Waist	Length	Length Extra long sleeve
36	108	98	80	-
37-38	114	102	80	84
39-40	120	106	80	84
41-42	126	112	82	86
43-44	132	122	82	86
45-46	138	130	84	88
47-48	144	138	84	88
49-50	152	146	86	-



BODY FIT

Die körpernahe taillierte Passform für schlanke und modebewusste Personen. Zwei Abnäher im Rücken garantieren einen figurbetonten Sitz.

The body-hugging, tapered fit for Slim and fashion-conscious people. Two tucks in the back guarantee a figure-hugging fit.



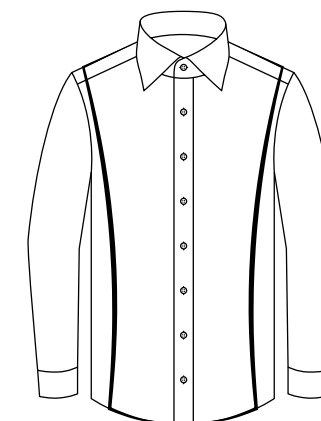
Kragenweite	Oberweite	Taillenweite	Hemdlänge	Hemdlänge bei AL 69
Neck	Chest	Waist	Length	Length Extra long sleeve
36	98	86	76	-
37-38	104	92	78	81
39-40	110	98	80	83
41-42	116	104	80	83
43-44	124	112	83	87
45-46	132	120	85	89



SUPER SLIM

Der stark taillierte, körpernahe Schnitt für athletische Proportionen. Aus Comfort-Stretch-Gewebe für uneingeschränkt hohen Tragekomfort.

The close-fitting, heavily tapered cut for those with the proportions of an athlete. Made from comfort stretch fabric for excellent, unrestricted wearing comfort.



Kragenweite	Oberweite	Taillenweite	Hemdlänge	Hemdlänge bei AL 69
Neck	Chest	Waist	Length	Length Extra long sleeve
36	96	80	76	79
37-38	102	86	78	81
39-40	106	92	80	83
41-42	112	98	80	83
43-44	120	106	83	87
45-46	128	114	85	89

**NOS / 06**

**POLOS · T-SHIRTS**

**LUXOR COMFORT FIT**

**LUXOR MODERN FIT**

**LEVEL FIVE**

**NO. SIX**

**TENDENZ**

**LUCKY BLUSEN / BLOUSES**

**FEUERWEHR / FIRE BRIGADE PILOT**

**ACCESSORIES**

**INFO · CONTACT**



SEARCH DOCUMENT

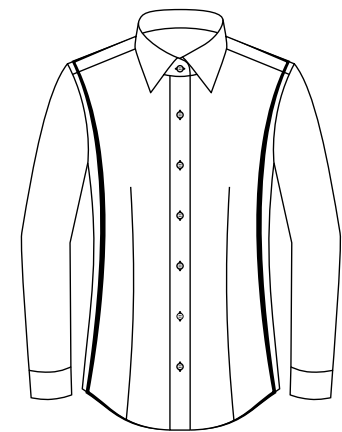


WRITE US AN EMAIL



Die klassisch bequeme Passform zeichnet sich durch eine sehr komfortable Schnittführung aus.

This classic comfortable fit is characterised by a very comfortable cut.

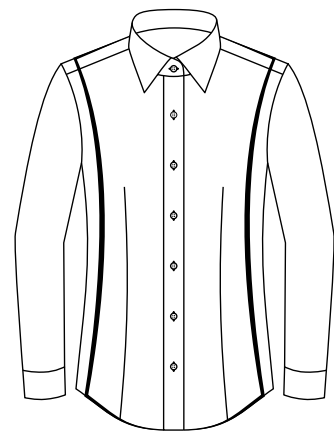


Grösse	Oberweite	Taillenweite	Blusenlänge
Size	Chest	Waist	Length
32	88	78	65
34	92	82	65
36	96	86	65
38	100	90	65
40	104	94	66
42	108	100	66
44	114	106	67
46	120	112	67
48	128	120	69
50	136	128	69
52	144	136	75
54	152	144	75

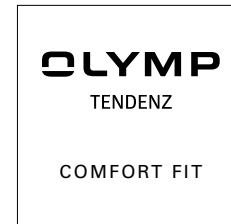


Die modisch zeitgemäße Schnittform mit ihrer leichten Taillierung einer schmalen Silhouette.

This fashionably contemporary cut with its gentle tapering corresponds to a slim silhouette.

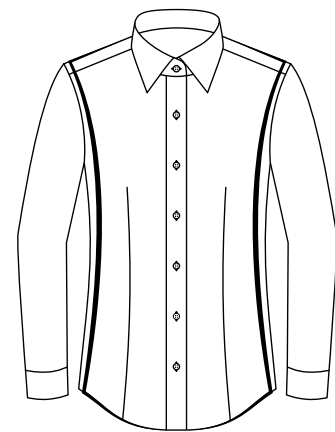


Grösse	Oberweite	Taillenweite	Blusenlänge
Size	Chest	Waist	Length
32	87	74	65
34	91	78	65
36	95	82	65
38	99	86	65
40	103	90	65
42	107	95	66
44	111	100	66
46	116	106	67
48	122	112	67
50	129	120	69



Die klassisch bequeme Passform zeichnet sich durch eine sehr komfortable Schnittführung aus.

This classic comfortable fit is characterised by a very comfortable cut.



Grösse	Oberweite	Taillenweite	Blusenlänge
Size	Chest	Waist	Length
32	88	78	65
34	92	82	65
36	96	86	65
38	100	90	65
40	104	94	66
42	108	100	66
44	114	106	67
46	120	112	67
48	128	120	69
50	136	128	69
52	144	136	75
54	152	144	75



Die körpernahe taillierte Passform für schlanke und modebewusste Personen. Zwei Abnäher im Rücken garantieren einen figurbetonten Sitz.

The body-hugging, tapered fit for Slim and fashion-conscious people. Two tucks in the back guarantee a figure-hugging fit.

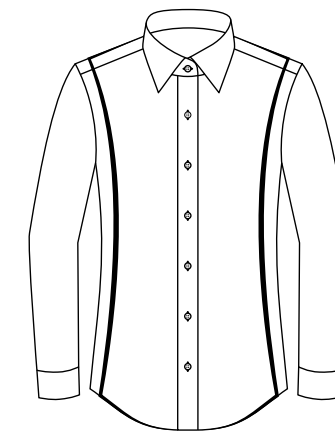


Grösse	Oberweite	Taillenweite	Blusenlänge
Size	Chest	Waist	Length
32	86	71	64
34	90	75	64
36	94	79	64
38	98	83	64
40	102	87	64
42	106	91	65
44	110	97	65
46	116	104	66



Die lässig modische Schnittform mit leichter Taillierung.

The casually fashionable cut with a slight waistline



Kragenweite	Oberweite	Taillenweite	Blusenlänge
Neck	Chest	Waist	Length
32	90	80	66
34	94	84	66
36	98	88	66
38	102	92	66
40	106	96	66
42	110	102	67
44	115	108	67
46	121	114	68
48	129	122	68
50	136	130	70



**NOS / 06**

**POLOS · T-SHIRTS**

**LUXOR COMFORT FIT**

**LUXOR MODERN FIT**

**LEVEL FIVE**

**NO. SIX**

**TENDENZ**

**LUCKY BLUSEN / BLOUSES**

**FEUERWEHR / FIRE BRIGADE PILOT**

**ACCESSORIES**

**INFO · CONTACT**





Kent



New Kent



New York Kent



Arezzo



Carpi



Elbe



Global Kent



Urban Kent



Haifisch / Cutaway



Greta



Karla



Luisa



Button-down



Elbe



Kent



Susa



**NOS / 06**

**POLOS · T-SHIRTS**

**LUXOR COMFORT FIT**

**LUXOR MODERN FIT**

**LEVEL FIVE**

**NO. SIX**

**TENDENZ**

**LUCKY BLUSEN /  
BLOUSES**

**FEUERWEHR /  
FIRE BRIGADE PILOT**

**ACCESSORIES**

**INFO · CONTACT**



SEARCH  
DOCUMENT



WRITE US  
AN EMAIL



Verstellbare Manschette mit Kombi-Funktion / Adjustable cuff with combi function

Zwei Knöpfe zur Weitenregulierung, zwei Knopflöcher für Manschettenknöpfe / Two buttons to adjust width, two button-holes for cuff links



Verstellbare Manschette / Adjustable cuff

Zwei Knöpfe zur Weitenregulierung / Two buttons to adjust width

Damen / Ladies

Fertigmaße in cm / Finished sizes in cm

Konfektionsgröße / Garment size	32	34	36	38	40	42	44	46	48	50	52	54
<b>Lucky Blusen / Blouses</b>												
Oberweite / Total chest measurement	90	94	98	102	106	110	115	121	129	136		
Taillenweite / Total waist measurement	80	84	88	92	96	102	108	114	122	130		
Blusenlänge / Blouse length												
Normal / Regular sleeve	66	66	66	66	66	67	67	68	68	70		
<b>Comfort fit</b>												
Oberweite / Total chest measurement	88	92	96	100	104	108	114	120	128	136	144	152
Taillenweite / Total waist measurement	78	82	86	90	94	100	106	112	120	128	136	144
Blusenlänge / Blouse length												
Normal / Regular sleeve	65	65	65	65	66	66	67	67	69	69	75	75
<b>Modern fit</b>												
Oberweite / Total chest measurement	87	91	95	99	103	107	111	116	122	129		
Taillenweite / Total waist measurement	74	78	82	86	90	95	100	106	112	120		
Blusenlänge / Blouse length												
Normal / Regular sleeve	65	65	65	65	65	66	66	67	67	69		
<b>Body fit</b>												
Oberweite / Total chest measurement	86	90	94	98	102	106	110	116				
Taillenweite / Total waist measurement	71	75	79	83	87	91	97	104				
Blusenlänge / Blouse length												
Normal / Regular sleeve	64	64	64	64	64	65	65	66				
Extra langer Arm / Extra long sleeve	70	70	70	70	70	70	70	72				
<b>Pilot - Feuerwehr / Pilot - Fire brigade</b>												
Oberweite / Total chest measurement	92	96	100	104	108	112	118	124	130			
Taillenweite / Total waist measurement	82	86	90	94	98	102	108	114	120			
Blusenlänge / Blouse length												
Normal / Regular sleeve	70	70	70	70	70	70	70	70	70			
<b>Größen / Sizes</b>												
	XS	S	M	L	XL	XXL	3XL	4XL				
<b>Polo</b>												
Länge gem. von Höchstem Schulterpunkt / Length acc. to Highest Shoulder Point	63,8	65,4	67	69,7	72,4	75,1	77,8	80,5				
1/2 Brustweite / 1/2 Chest width	40	44	48	52	58	64	70	76				
1/2 Taillenweite / 1/2 Waist width	38	41	45	50	57	65	70	75				



**NOS / 06**

**POLOS · T-SHIRTS**

**LUXOR COMFORT FIT**

**LUXOR MODERN FIT**

**LEVEL FIVE**

**NO. SIX**

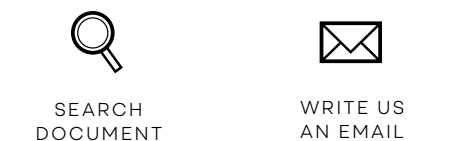
**TENDENZ**

**LUCKY BLUSEN / BLOUSES**

**FEUERWEHR / FIRE BRIGADE PILOT**

**ACCESSORIES**

**INFO · CONTACT**





**Herren / Men**

Fertigmaße in cm / Finished sizes in cm

Größen / Sizes		XS	S	M	L	XL	XXL	3XL	4XL	5XL	6XL
Kragenweite / Neck	cm	36	37 - 38	39 - 40	41 - 42	43 - 44	45 - 46	47 - 48	49 - 50	52	54
	inch	14	14½ - 15	15½ - 15¾	16 - 16½	17 - 17½	17¾ - 18	18½ - 19	19½ - 19¾	20½	21½
<b>Comfort Fit</b>											
Oberweite / Total chest measurement				122	128	134	140	148	156	164	172
Taillenweite / Total waist measurement				118	124	132	140	148	156	164	172
Rückenbreite / Back width				49,5	51	52,5	54	55,5	57,5	59,5	61,5
Hemdlänge / Shirt length											
bei AL 12 kurz / Short sleeve				80	82	82	84	84	86		
bei AL 64 normal / Regular sleeve				80	82	82	84	84	86	86	88
bei AL 58 / Extra short sleeve				80	82	82	84	84			
bei AL 69 / Extra long sleeve				84	86	86	88	88			
<b>Modern Fit</b>											
Oberweite / Total chest measurement		108	114	120	126	132	138	144	152		
Taillenweite / Total waist measurement		98	102	106	112	122	130	138	146		
Rückenbreite / Back width		45,5	47	48,5	50	51,5	53	54,5	56,5		
Hemdlänge / Shirt length											
bei AL 12 kurz / Short sleeve		80	80	80	82	82	84	84	86		
bei AL 64 normal / Regular sleeve		80	80	80	82	82	84	84	86		
bei AL 58 / Extra short sleeves			80	80	82	82	84	84			
bei AL 69 / Extra long sleeve			84	84	86	86	88	88			
bei AL 72 / Extra long sleeves			88	88	90	90	92	92			
<b>Body Fit</b>											
Oberweite / Total chest measurement		98	104	110	116	124	132				
Taillenweite / Total waist measurement		86	92	98	104	112	120				
Rückenbreite / Back width		38	40	42	44	46	48				
Hemdlänge / Shirt length											
bei AL 12 kurz / Short sleeve		76	76	80	80	83	85				
bei AL 64 normal / Regular sleeve		76	78	80	80	83	85				
bei AL 69 / Extra long sleeve			81	83	83	87	89				
<b>Super Slim</b>											
Oberweite / Total chest measurement		96	102	106	112	120	128				
Taillenweite / Total waist measurement		80	86	92	98	106	114				
Rückenbreite / Back width		40	41,5	43	45	47	49				
Hemdlänge / Shirt length											
bei AL 64 normal / Regular sleeve		76	78	80	80	83	85				
bei AL 69 / Extra long sleeve		79	81	83	83	87	89				
Größen / Sizes		XS	S	M	L	XL	XXL	3XL	4XL	5XL	6XL
<b>Polo</b>											
Länge gem. von Höchstem Schulterpunkt / Length acc. to Highest Shoulder Point		70	71	73	75	77	79	82	85	87	89
1/2 Brustweite / 1/2 Chest width		47	49	53	57	61	66	71	75	80	85

**Herren / Men**

Fertigmaße in cm / Finished sizes in cm

Größen / Sizes		XS	S	M	L	XL	XXL	3XL	4XL	5XL	6XL
Kragenweite / Neck	cm	36	37 - 38	39 - 40	41 - 42	43 - 44	45 - 46	47 - 48	49 - 50	52	54
	inch	14	14½ - 15	15½ - 15¾	16 - 16½	17 - 17½	17¾ - 18	18½ - 19	19½ - 19¾	20½	21½
<b>T Shirt</b>											
Länge gem. von Höchstem Schulterpunkt / Length acc. to Highest Shoulder Point		67	67	69	72	74	77	80	83		
1/2 Brustweite / 1/2 Chest width		38	41	44	48	52	56	62	68		
Größen / Sizes		XS	S	M	L	XL	XXL	3XL	4XL	5XL	6XL
Kragenweite / Neck	cm	36	37 - 38	39 - 40	41 - 42	43 - 44	45 - 46	47 - 48	49 - 50	52	54
	inch	14	14½ - 15	15½ - 15¾	16 - 16½	17 - 17½	17¾ - 18	18½ - 19	19½ - 19¾	20½	21½
<b>Comfort Fit Feuerwehr</b>											
Oberweite / Total chest measurement						136	144	150	158	166	172
Taillenweite / Total waist measurement						136	144	150	158	166	172
Rückenbreite / Back width						51	53	55	57	59	61
Hemdlänge / Shirt length											
bei AL 12 kurz / Short sleeve						85	85	85	85	90	90
bei AL 64 normal / Regular sleeve						85	85	85	85	90	90
<b>Modern Fit Pilot - Feuerwehr</b>											
Oberweite / Total chest measurement		108	114	120	126	132	138	144	152		
Taillenweite / Total waist measurement		98	102	106	112	122	130	136	144		
Rückenbreite / Back width		45	47	49	50,5	52	53,5	55	56,5		
Hemdlänge / Shirt length											
bei AL 12 kurz / Short sleeve		81	81	81	81	86	86	90	90		
bei AL 64 normal / Regular sleeve		81	81	81	81	86	86	90	90		
bei AL 69 / Extra long sleeve		85	85	85	85	90	95	95	95		
bei AL 72 / Extra long sleeves		85	85	85	85	90	95	95	95		
<b>Comfort Fit Pilot - City 112</b>											
Oberweite / Total chest measurement			112	118	126	132	142	150	158		
Taillenweite / Total waist measurement			104	112	120	128	140	150	158		
Rückenbreite / Back width			45	47	49	51	53	55	57		
Hemdlänge / Shirt length			80	80	80	85	85	85	85		
<b>Body Fit Pilot</b>											
Oberweite / Total chest measurement		98	104	110	116						
Taillenweite / Total waist measurement		86	92	98	104						
Rückenbreite / Back width		39,4	41	42,6	44,2						
Hemdlänge / Shirt length											
bei AL 12 kurz / Short sleeve		74	76	78	78						
bei AL 64 normal / Regular sleeve		74	76	78	78						

**NOS / 06**

**POLOS · T-SHIRTS**

**LUXOR COMFORT FIT**

**LUXOR MODERN FIT**

**LEVEL FIVE**

**NO. SIX**

**TENDENZ**

**LUCKY BLUSEN / BLOUSES**

**FEUERWEHR / FIRE BRIGADE PILOT**

**ACCESSORIES**

**INFO · CONTACT**



SEARCH DOCUMENT



WRITE US AN EMAIL

**OLYMP**



**NOS / 06**

**POLOS · T-SHIRTS**

**LUXOR COMFORT FIT**

**LUXOR MODERN FIT**

**LEVEL FIVE**

**NO. SIX**

**TENDENZ**

**LUCKY BLUSEN /  
BLOUSES**

**FEUERWEHR /  
FIRE BRIGADE PILOT**

**ACCESSORIES**

**INFO · CONTACT**

**OLYMP**

OLYMP BEZNER KG · HÖPFIGHEIMER STRASSE 19 · 74321 BIETIGHEIM-BISSINGEN · GERMANY  
TELEFON +49 7142 592-0 · FAX +49 7142 592-19 · CF@OLYMP.COM · OLYMP.COM



SEARCH DOCUMENT



WRITE US AN EMAIL